



# HUBBELL

# ONE

**Empower  
your entire  
enterprise with  
the intelligent  
infrastructure  
solutions of  
Hubbell One.**

Today's complex IT environment is about more than just great products. It's about increased productivity, improved customer response, and reduced cost of ownership. It's about leveraging new technologies for a competitive advantage.

The opportunity to improve productivity is all around us. Whether it's deploying a 10 GbE solution, Power over Ethernet (PoE) connections, cable management systems and enclosures, connections in harsh environments, or deploying zone cabling to bring higher bandwidth to users, network infrastructures must evolve.

Hubbell One provides a comprehensive infrastructure solution delivered by one vendor with one objective: evolving your network to empower your enterprise.

From data center to desktop to factory floor, Hubbell delivers systems that address the critical issues facing today's businesses. Our comprehensive infrastructure solutions provide best-in-class performance and lowest total installed cost. Hubbell systems work seamlessly together. This dynamic versatility maximizes the value of your infrastructure in ways that stand alone connectivity, delivery and cable management systems simply cannot.



Hubbell Premise Wiring

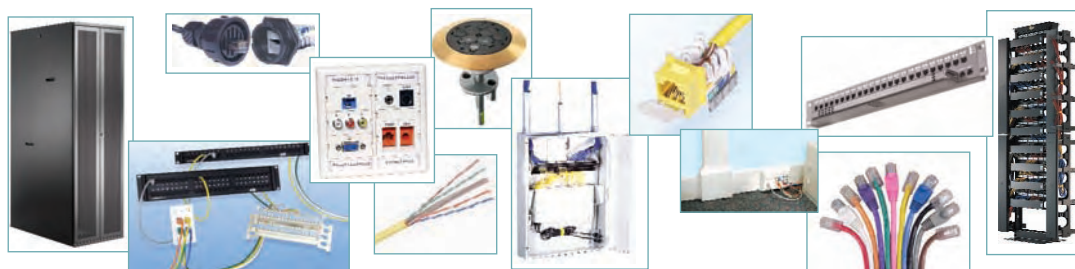
# SECTION 12 HUBBELL PREMISE WIRING

## FEATURED PRODUCTS



Hubbell Premise Wiring

Hubbell One... the seamless system approach.



### HUBBELL NextSpeed High Performance Channel Systems

- Category 5e, 6 & 10GbE
  - ▲ Jacks
  - ▲ Panels
  - ▲ Cords
  - ▲ Cable

### HUBBELL iFrame Data Center Infrastructure Products

- Server Cabinet
- Vertical Patch Panel
- Power Distribution
- Network Gear Management

### HUBBELL InfineStation Converged Workstation Products

- Modular Face Plate System
- Outlet Frames
- Specialty Plates
- AV Modules

### HUBBELL OptiChannel Fiber Solutions

- Connectors
- Tools
- Patch Cords
- Enclosures
- Plug & Play Cassettes

### HUBBELL ReBox Remote Equipment Cabinets

- UL Type 2, 3R, 4 & 4X, 12, 13
- Super Quad Cab Wall Mount Enclosures

### HUBBELL Delivery+ Power & Data Delivery Products

- Raceway
- Poke Throughs
- Floor Boxes
- Surface Mount Boxes
- Power Poles

### HUBBELL PowerTrac Power and Managed IP Devices

- Intelligent Patch Panel
- Mid SAN PoE
- Asset Management

### HUBBELL NextFrame Cable Management Products

- Vertical & Horizontal Cable Management
- Ladder & Center Rack
- Equipment Racks

### HUBBELL HiImpact Harsh Environment Products

- Connectors
- Plates & Boxes
- Cabinets
- Conduit

HUBBELL  
Advantage

# SOLUTION

## SPEEDGAIN® Category 5e



### Xcelerator™ Category 5e Jacks



PART No. EACH	PART No. 25 PER BAG	COLOR
HXJ5EBK	HXJ5EBK25	Black
HXJ5EB	HXJ5EB25	Blue
HXJ5EEI	HXJ5EEI25	Electric Ivory
-----	HXJ5EGL25	Gold
HXJ5EGR	HXJ5EGR25	Grey
HXJ5EGN	HXJ5EGN25	Green
HXJ5EOW	HXJ5EOW25	Office White
HXJ5EOR	HXJ5EOR25	Orange
HXJ5EP	HXJ5EP25	Purple
HXJ5ER	HXJ5ER25	Red
HXJ5ETI	HXJ5ETI25	Telco Ivory
HXJ5EW	HXJ5EW25	White
HXJ5EY	HXJ5EY25	Yellow

#### TERMINATION TOOL

PART No.	DESCRIPTION
TX4P	1-Punch Tool; Terminates All Four Pairs at One Time

For Mission Critical Warranty Partners, see  
[www.hubbell-premise.com/CablePartners.asp](http://www.hubbell-premise.com/CablePartners.asp)

### Infin-e-Station Faceplates



#### REAR LOADING

PART No.	DESCRIPTION
IFP11**	1 Port IFP Faceplate, Single Gang
IFP12**	2 Port IFP Faceplate, Single Gang
IFP13**	3 Port IFP Faceplate, Single Gang
IFP14**	4 Port IFP Faceplate, Single Gang
IFP16**	6 Port IFP Faceplate, Single Gang
IFP29**	9 Port IFP Faceplate, Double Gang
IFP212**	12 Port IFP Faceplate, Double Gang

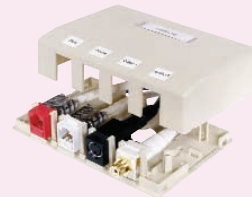
Selecting Colors for Faceplates: Substitute XX in the part number for the desired color:  
 BK = black, EI = electric ivory, GY = grey, OW = office white, TI = telco ivory, W = white



#### MODULAR FURNITURE

PART No.	DESCRIPTION
FP2**	2 Port MFP
FP4**	4 Port MFP (2 x 2)
FP4B**	4 Port MFP (4 x 1)

Selecting Color: Substitute XX in the part number for the desired color: BK = black, GY = grey



#### SURFACE BOX

PART No.	DESCRIPTION
ISM1**	1 Port Surface Box
ISM2**	2 Port Surface Box
ISM4**	4 Port Surface Box
ISM6**	6 Port Surface Box
ISM12**	12 Port Surface Box

Selecting Colors: Substitute XX in the part number for the desired color:  
 BK = black, EI = electric ivory, GY = grey, OW = office white, W = white



Hubbell Premise Wiring

### SPEEDGAIN® Cat 5e Patch Panels



PART No.	DESCRIPTION
P5E16UE	16 Port Cat 5e Panel, Universal Wiring
P5E24UE	24 Port Cat 5e Panel, Universal Wiring
P5E48UE	48 Port Cat 5e Panel, Universal Wiring
P5E96UE	96 Port Cat 5e Panel, Universal Wiring

*Note: Add "W" to the end of the part number for panel in white; also available with 568B wiring and with management bar. Contact your Accu-Tech sales rep for information on these options.*

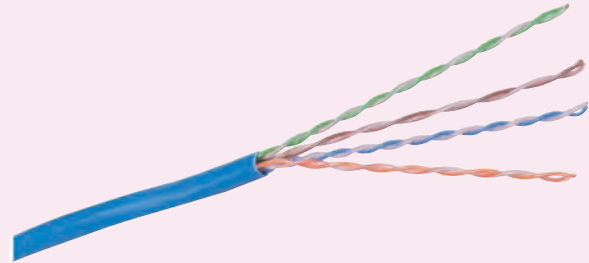
### Category 5e Patch Cords—PCX Series



PART No.	DESCRIPTION
PCX5EB*	Cat 5e Booted Patch Cord, Blue
PCX5BK*	Cat 5e Booted Patch Cord, Black
PCX5GY*	Cat 5e Booted Patch Cord, Gray
PCX5Y*	Cat 5e Booted Patch Cord, Yellow
PCX5OR*	Cat 5e Booted Patch Cord, Orange
PCX5R*	Cat 5e Booted Patch Cord, Red
PCX5GN*	Cat 5e Booted Patch Cord, Green
PCX5P*	Cat 5e Booted Patch Cord, Purple
PCX5W*	Cat 5e Booted Patch Cord, White

*Note: Replace "\*" in the part number with the length desired.*

### SPEEDGAIN® Category 5e, 4 Pair UTP Cable



RISER		
PART No. SPOOL	PART No. REELEX*	COLOR
C5EPSRB	C5EPRRB	Blue
C5EPSRGY	C5EPRRGY	Grey
C5EPSRW	C5EPRRW	White
C5EPSRY	C5EPRRY	Yellow

PLENUM		
PART No. SPOOL	PART No. REELEX*	COLOR
C5EPPB	C5EPRPB	Blue
C5EPPGY	C5EPRPGY	Grey
C5EPPW	C5EPRPW	White
C5EPPY	C5EPRPY	Yellow

*\*REELEX is licensed and patented by Windings Inc.*

For Mission Critical Warranty Partners, see [www.hubbell-premise.com/CablePartners.asp](http://www.hubbell-premise.com/CablePartners.asp)

# SOLUTION

## NEXTSPEED® Category 6



### Xcelerator™ Category 6 Jacks



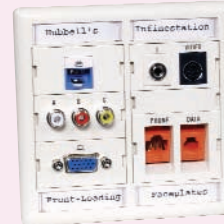
PART No. EACH	PART No. 25 PER BAG	COLOR
HXJ6BK	HXJ6BK25	Black
HXJ6B	HXJ6B25	Blue
HXJ6EI	HXJ6EI25	Electric Ivory
-----	HXJ6GL25	Gold
HXJ6GR	HXJ6GR25	Gray
HXJ6GN	HXJ6GN25	Green
HXJ6OW	HXJ6OW25	Office White
HXJ6OR	HXJ6OR25	Orange
-----	HXJ6P25	Purple
HXJ6R	HXJ6R25	Red
HXJ6TI	HXJ6TI25	Telco Ivory
HXJ6W	HXJ6W25	White
HXJ6Y	HXJ6Y25	Yellow

#### TERMINATION TOOL

PART No.	DESCRIPTION
TX4P	1-Punch Tool; Terminates All Four Pairs at One Time

For Mission Critical Warranty Partners, see  
[www.hubbell-premise.com/CablePartners.asp](http://www.hubbell-premise.com/CablePartners.asp)

### Infin-e-Station Plate Frames



#### FRONT LOADING

PART No.	DESCRIPTION
IMF1**	Single Gang Plate Frame
IMF2**	Double Gang Plate Frame
IMB05**	Blank .5 Unit
IMB1**	Blank 1.5 Unit
IM1K1**	1 Port Keystone Flat
IM2K1**	2 Port Keystone Flat
IM1KA15**	1 Port Keystone Angled
IM2KA15**	2 Port Keystone Angled

Selecting Colors for Faceplates: Substitute XX in the part number for the desired color:  
 BK = black, EI = electric ivory, GY = grey, OW = office white, TI = telco ivory, W = white



#### MODULAR FURNITURE

PART No.	DESCRIPTION
FP2**	2 Port MFP
FP4**	4 Port MFP (2 x 2)
FP4B**	4 Port MFP (4 x 1)

Selecting Color: Substitute XX in the part number for the desired color: BK = black, GY = grey

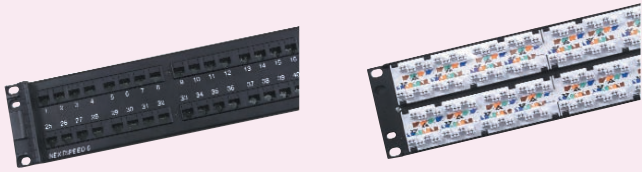


#### SURFACE BOX

PART No.	DESCRIPTION
ISM1**	1 Port Surface Box
ISM2**	2 Port Surface Box
ISM4**	4 Port Surface Box
ISM6**	6 Port Surface Box
ISM12**	12 Port Surface Box

Selecting Colors: Substitute XX in the part number for the desired color:  
 BK = black, EI = electric ivory, GY = grey, OW = office white, W = white

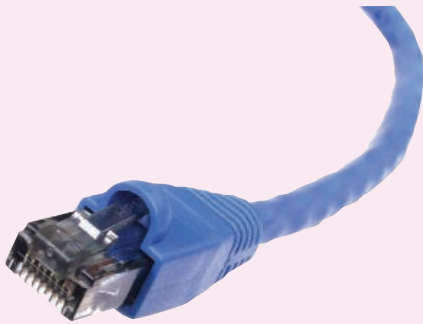
## NEXTSPEED® Cat 6 Patch Panels



PART No.	DESCRIPTION
P6E24U	24 Port Cat 6e Panel, Universal Wiring
P6E48U	48 Port Cat 6e Panel, Universal Wiring
P6E96U	96 Port Cat 6e Panel, Universal Wiring

*Note: Add "W" to the end of the part number for panel in white; also available with 568B wiring and with management bar. Contact your Accu-Tech sales rep for information on these options.*

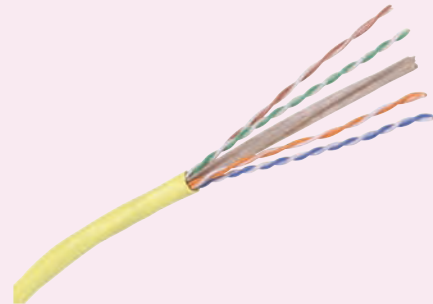
## Category 6 Patch Cords—PCX Series



PART No.	DESCRIPTION
PCX6B*	Cat 6 Booted Patch Cord, Blue
PCX6BK*	Cat 6 Booted Patch Cord, Black
PCX6GY*	Cat 6 Booted Patch Cord, Gray
PCX6Y*	Cat 6 Booted Patch Cord, Yellow
PCX6OR*	Cat 6 Booted Patch Cord, Orange
PCX6R*	Cat 6 Booted Patch Cord, Red
PCX6GN*	Cat 6 Booted Patch Cord, Green
PCX6P*	Cat 6 Booted Patch Cord, Purple
PCX6W*	Cat 6 Booted Patch Cord, White

*Note: Replace "\*" in the part number with the length desired.*

## NEXTSPEED® Category 6, 4 Pair UTP Cable



### RISER

PART No. SPOOL	PART No. REELEX*	COLOR
C6SRB	C6RRB	Blue
C6SRGY	C6RRGY	Grey
C6SRW	C6RRW	White
C6SRY	C6RRY	Yellow

### PLENUM

PART No. SPOOL	PART No. REELEX*	COLOR
C6SPB	C6RPB	Blue
C6SPGY	C6RPGY	Grey
C6SPW	C6RPW	White
C6SPY	C6RPY	Yellow

*\*REELEX is licensed and patented by Windings Inc.*

For Mission Critical Warranty Partners, see  
[www.hubbell-premise.com/CablePartners.asp](http://www.hubbell-premise.com/CablePartners.asp)

# SOLUTION

## NEXTSPEED® Ascent 10G



### NEXTSPEED® Ascent 10GbE Jack

PART No.	DESCRIPTION	COLOR
HXJ6ABK	UTP 10Gig 568A/B Jack	Black
HXJ6AB	UTP 10Gig 568A/B Jack	Blue
HXJ6AGY	UTP 10Gig 568A/B Jack	Grey
HXJ6AOW	UTP 10Gig 568A/B Jack	Office white
HXJ6AOR	UTP 10Gig 568A/B Jack	Orange
HXJ6AW	UTP 10Gig 568A/B Jack	White
SJ62A	FTP 10Gig 568A Jack - 2 Pack	Metal
SJ62B	FTP 10Gig 568B Jack - 2 Pack	Metal

### Patch Panel, NEXTSPEED® Ascent 10GbE

PART No.	DESCRIPTION	RU
P6A24U	24 Port 10Gig UTP Patch Panel	1
P6A48U	48 Port 10Gig UTP Patch Panel	2
P6A96U	96 Port 10Gig UTP Patch Panel	4
PJS24	24 Port Unloaded Patch Panel	1

### NEXTSPEED® Ascent 10G Jacks



Universal wiring. Order quantity: carton of 25.

PART No.	COLOR
HXJ6ABK	Black
HXJ6AB	Blue
HXJ6AGY	Grey
HXJ6AOW	Office White
HXJ6AOR	Orange
HXJ6AW	White

### Infin-e-Station Faceplates



#### REAR LOADING

PART No.	DESCRIPTION
IFP11**	1 Port IFP Faceplate, Single Gang
IFP12**	2 Port IFP Faceplate, Single Gang
IFP13**	3 Port IFP Faceplate, Single Gang
IFP14**	4 Port IFP Faceplate, Single Gang
IFP16**	6 Port IFP Faceplate, Single Gang
IFP29**	9 Port IFP Faceplate, Double Gang
IFP212**	12 Port IFP Faceplate, Double Gang

Selecting Colors for Faceplates: Substitute XX in the part number for the desired color: BK = black, EI = electric ivory, GY = grey, OW = office white, TI = teko ivory, W = white

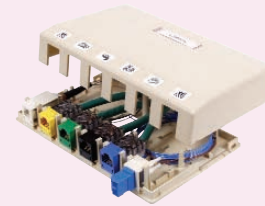
### Infin-e-Station Faceplates (Continued)



#### MODULAR FURNITURE

PART No.	DESCRIPTION
FP2**	2 Port MFP
FP4**	4 Port MFP (2 x 2)
FP4B**	4 Port MFP (4 x 1)

Selecting Color: Substitute XX in the part number for the desired color: BK = black, GY = grey

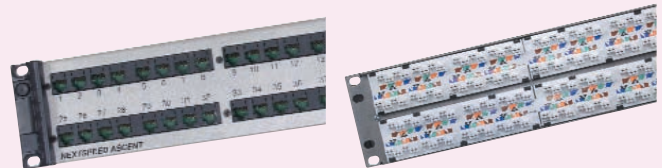


#### SURFACE BOX

PART No.	DESCRIPTION
ISM1**	1 Port Surface Box
ISM2**	2 Port Surface Box
ISM4**	4 Port Surface Box
ISM6**	6 Port Surface Box
ISM12**	12 Port Surface Box

Selecting Colors: Substitute XX in the part number for the desired color: BK = black, EI = electric ivory, GY = grey, OW = office white, W = white

### NEXTSPEED® Ascent 10G Patch Panels



NEXTSPEED® Ascent 10G series patch panels are available in silver and black, 24, 48, and 96 ports and supplied with labeling for T56A/B wiring. The 8 port adapter's fully enclosed shell protects the PCB from contaminants and errant terminations, and also allows icons to be installed on each jack port for identification. Patch Panel includes: patch panel, clear plastic label holders, universal wiring insert and mounting hardware.

PART No.	DESCRIPTION	DIMENSIONS
P6A24U	24 Port, 1RU, Universal Wiring, Black	1.75" x 19"
P6A48U	48 Port, 2RU, Universal Wiring, Black	3.50" x 19"
P6A96U	96 Port, 4RU, Universal Wiring, Black	7.00" x 19"

Note: Add "S" to part number for silver finish.

## NEXTSPEED® Ascent 10G Patch Cords



Ascent 10G series patch cord's unique plug design provides a simple, sleek, low-profile solution for high-density switch application. Ascent patch cords are available in dark grey and invarious lengths accommodating your networking needs.

PART No.	DESCRIPTION
PC6AXXDG	Dark Grey 10G Patch Cord
PS6XX**	Shielded Cat 6/10GbE Patch Cord

\*\* For colors replace \*\* with B = blue, GY = grey

Note: For lengths, substitute "XX" in the part number with the length desired:  
01 = 1', 03 = 3', 05 = 5', 07 = 7', 10 = 10', 15 = 15', 20 = 20'.

MTO lengths: 25', 30', 35', 40', 45', 50', 55', 60' and 75'.

## NEXTSPEED® Ascent 10GbE

### RISER

PART No.	DESCRIPTION	PUTUPS
C6ASRB	UTP 10Gig Blue CMR	Spool
C6ASRGY	UTP 10Gig Grey CMR	Spool
C6ASRW	UTP 10Gig White CMR	Spool
C6ASRY	UTP 10Gig Yellow CMR	Spool
C6ARRB	UTP 10Gig Blue CMR	Reelex
C6ARRGY	UTP 10Gig Grey CMR	Reelex
C6ARRW	UTP 10Gig White CMR	Reelex
C6ARRY	UTP 10Gig Yellow CMR	Reelex
C6FTPSRB	FTP 10Gig Blue CMR	Reel
C6FTPSRGY	FTP 10Gig Grey CMR	Reel
C6FTPSRW	FTP 10Gig White CMR	Reel
C6FTPSRY	FTP 10Gig Yellow CMR	Reel

### PLENUM

C6ASPB	UTP 10Gig Blue CMP	Spool
C6ASPG	UTP 10Gig Grey CMP	Spool
C6ASPW	UTP 10Gig White CMP	Spool
C6ASPY	UTP 10Gig Yellow CMP	Spool
C6FTPSPB	FTP 10Gig Blue CMP	Reel
C6FTPSPGY	FTP 10Gig Grey CMP	Reel
C6FTPSPW	FTP 10Gig White CMP	Reel
C6FTPSPY	FTP 10Gig Yellow CMP	Reel

## NEXTSPEED® Ascent 10G Cable



NEXTSPEED® Ascent 10G 4 Pair UTP cable provides usable bandwidth beyond 625 MHz to run all of your bandwidth-intensive applications. Whether it's server-to-server in the data center or delivering IP convergence to the desktop, NEXTSPEED Ascent 10G cable is your perfect solution.

### RISER

PART No. SPOOL	PART No. REELEX*	COLOR
C6ASRB	C6ARRB	Blue
C6ASRGY	C6ARRGY	Grey
C6ASRW	C6ARRW	White
C6ASRY	C6ARRY	Yellow

### PLENUM

PART No. SPOOL	COLOR
C6ASPB	Blue
C6ASPG	Grey
C6ASPW	White
C6ASPY	Yellow

\*REELEX is licensed and patented by Windings Inc.

For Mission Critical Warranty Partners, see  
[www.hubbell-premise.com/CablePartners.asp](http://www.hubbell-premise.com/CablePartners.asp)



# SOLUTION

## Fiber Optic



### Rack Mount Enclosures



#### FCR SERIES SLIDING RACK MOUNT ENCLOSURE

PART No.	NO. OF ADAPTER PANELS	HEIGHT	RACK UNITS
FCR350SP36R	6	3.50"	2
FCR350SP54R	9	3.50"	2
FCR5255SPR	12	5.25"	3
FCR700SP	15	7.00"	4



#### FPR SERIES HINGED RACK MOUNT ENCLOSURE—ADAPTER PANEL VERSION

PART No.	CAPACITY
FPR3SP	Up to 3 FSP Adapter Panels

#### FPR SERIES HINGED RACK MOUNT ENCLOSURE—PRE-PUNCHED PANEL VERSION

PART No.	CAPACITY	FORMAT	STYLE
FPR012STM	12	ST	Loaded
FPR012SCM	12	SC	Loaded
FPR024STM	24	ST	Loaded
FPR024SCM	24	SC	Loaded

### Wall Mount Enclosures



#### FTU SERIES SINGLE DOOR WALL MOUNT ENCLOSURE

PART No.	NO. OF FSP ADAPTER PANELS	HEIGHT	WIDTH
FTU2SP	2	8.50"	11.10"
FTU4SP	4	11.0"	13.60"

### Wall Mount Enclosures (Continued)



#### FCW SERIES DOUBLE DOOR WALL MOUNT ENCLOSURE

PART No.	NO. OF FSP ADAPTER PANELS	HEIGHT	WIDTH
FCW4SP	4	12.00"	14.00"
FCW12SP	12	16.00"	14.00"

### Optional Locks



Fits FCW, FTU and FCR enclosures.

PART No.	KEYS
FLOCK1	Same As FCW Technician Side
FLOCK2	Different From FCW Technician Side

### FSP Adapter Panels

#### SC SIMPLEX

PART No.	CAPACITY	STYLE	DENSITY
FSPSC6	6	Loaded	Standard
FSPSC8	8	Loaded	High

#### SC DUPLEX



PART No.	CAPACITY	STYLE	DENSITY
FSPSCD3	6	Loaded	Standard
FSPSCD6	12	Loaded	High

Note: Pre-loaded panels available with blue, orange, red, green and yellow adapters. Contact your Accu-Tech sales rep for information.

#### ST-STYLE

PART No.	CAPACITY	STYLE	DENSITY
FSPST6	6	Loaded	Standard
FSPST8	8	Loaded	High

#### LC



PART No.	CAPACITY	STYLE	DENSITY
FSPLC6	12	Loaded	Standard

Note: Also available in quad LC version.



Hubbell Premise Wiring

## Fiber Patch Cords



OptiChannel patch cords are available with zip cord or simplex 62.5/125, 50/125 and single-mode patch cables. Cords are available with a wide range of connector styles. All patch cords are factory polished and 100% optically tested.

### SC TO SC DUPLEX

PART No.	STYLE
DFPCSCSCXMM	Multimode 62.5/125
DFPCSCDXMM	Multimode 50/125
DFPCSCSXSM	Single-mode

Note: Replace "X" with length of 1, 2, 3, 5 or 10 meters. Fiber pigtails are also available.

### SC TO SC SIMPLEX

PART No.	STYLE
SFPCSCSCXMM	Multimode 62.5/125
SFPCSCDXMM	Multimode 50/125
SFPCSCSXSM	Single-mode

Note: Replace "X" with length of 1, 2, 3, 5 or 10 meters

### ST-STYLE TO ST-STYLE SIMPLEX

PART No.	STYLE
SFPCSTSTCXMM	Multimode 62.5/125
SFPCSTSTDMM	Multimode 50/125
SFPCSTSTXSMM	Single-mode

Note: Replace "X" with length of 1, 2, 3, 5 or 10 meters

### ST-STYLE TO SC DUPLEX

PART No.	STYLE
DFPCSTSCXMM	Multimode 62.5/125
DFPCSTSDXMM	Multimode 50/125
DFPCSTSCXSMM	Single-mode

Note: Replace "X" with length of 1, 2, 3, 5 or 10 meters

### ST-STYLE TO SC SIMPLEX

PART No.	STYLE
SFPCSTSCXMM	Multimode 62.5/125
SFPCSTSDXMM	Multimode 50/125
SFPCSTSCXSMM	Single-mode

Note: Replace "X" with length of 1, 2, 3 or 5 meters

## Connectors

### NON-ADHESIVE CRIMP TYPE—2QUICK®

The 2Quick SC and ST-style connectors install in minutes, and provide a high quality fiber connection. No epoxy, adhesives or proprietary tools required.



### SC MULTIMODE

PART No.	PACKAGING
FCSCMQ12R	12
FCSCMQ100R	100

### ST-STYLE MULTIMODE

PART No.	PACKAGING
FCSTMQ12RA	12
FCSTMQ100R	100

### ADHESIVE BASED—OPTICHANNEL™

Either anaerobic quick-cure or epoxy heat cure adhesives can be used.

### SC MULTIMODE

PART No.	PACKAGING
FCSCM12R	12
FCSCM100R	100

### ST-STYLE MULTIMODE

PART No.	PACKAGING
FCSTM12R	12
FCSTM100R	100

Note: MT-RJ and LC adhesive connectors are also available. Single-mode connectors are available. Multimode connectors accommodate 50/125 and 62.5/125 speeds.

## OptiChannel™ 10G Fiber Optic Patch Cords

PART No.	DESCRIPTION
DFPCSCCEXMM	SC To SC 50/125, 10G
DFPCLCLCEXMM	LC To LC 50/125, 10G
DFPLCCSCEXMM	LC To SC 50/125, 10G

Note: Replace "X" with standard lengths of 1, 2, 3, or 5 meters.

## Plug and Play Cassettes

PART No.	CONNECTOR TYPE	FIBER TYPE
OCSC50G	SC Duplex	50 µm/10GbE
OCLC50G	LC Duplex	50 µm/10GbE

## MTP To MTP Cords, 12 Fiber, 10GbE, With Pulling Grip

PART No.	FIBER TYPE	LENGTH
FPCMT50G10	50 µm/10GbE	10 Meters
FPCMT50G25	50 µm/10GbE	25 Meters
FPCMT50G50	50 µm/10GbE	50 Meters
FPCMT50G100	50 µm/10GbE	100 Meters

## Tool Kits & Accessories



PART No.	DESCRIPTION
OFLFP	Polishing Paper
OFCAP	Anaerobic Replacement Kit: Primer, Adhesive, Syringes
OFTP02C	Connector Installation Tool Pouch For ST/SC, Anaerobic And 2Quick

For Mission Critical Warranty Partners, see [www.hubbell-premise.com/CablePartners.asp](http://www.hubbell-premise.com/CablePartners.asp)