

# Your Cable Management Problems Are Over.

**With Cooper B-Line's RCM+ Cable Management Systems' Flexibility, Affordability and Ease Of Installation.**

Now, you have access to the most feature rich cable management system in the industry. Cooper B-Line's RCM+—a smartly designed system offering you simplified cable management and outstanding flexibility for all types of installations—all at a reduced total cost!

RCM+ rack cable managers feature an innovative, modular design giving you the flexibility and options you need to customize, upgrade or retrofit your structured cabling systems. Plus, RCM+ delivers the same top end, labor saving features of much higher priced systems.

No matter what your cable management requirements, look to Cooper B-Line's RCM+ cable managers to solve all your cable management problems.

For more information, contact your nearest distributor or visit us at [www.cooperbline.com](http://www.cooperbline.com)



## FEATURED PRODUCTS



### WALL MOUNT SOLUTIONS



#### Features

##### *DUAL HINGE WALL MOUNT*

- High quality 16 ga. steel construction
- Heavy duty, field reversible, hinge and lock system
- 200 – 300 lbs. equipment capacity

##### *ONE-PIECE WALL MOUNT CABINET*

- Welded construction
- Removable, locking side panels
- Reversible, locking glass front door
- Cutouts for fans and openings for venting

##### *SWING GATE EQUIPMENT RACK*

- Easy, one person installation in about five minutes
- Removable door
- 150 lbs. equipment capacity
- Door opens 130 degrees to the left or right

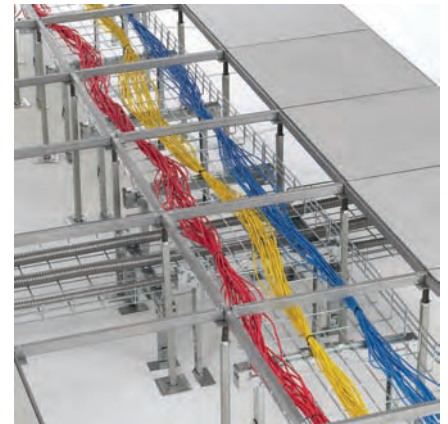
### CABLE HOOKS



#### Features

- Powder coated cable hooks now available from Cooper B-Line
- Supports all Category 5/5e/6, fiber optic, innerduct and low voltage cabling requirements
- Standard finish is Pre-Galvanized Steel
- Exclusive Qwik-Latch™ cable retainers are included in each box of cable hooks

### UNDER-FLOOR CABLE MANAGEMENT



#### Features

##### *F.A.S.T. SYSTEM*

##### *(FOLDABLE, ADJUSTABLE, STACKABLE TRAY SYSTEM)*

- Fastest under-floor system to install
- Toolless
- Independent of the raised floor

##### *GENERAL WIRE BASKET*

- On-site adaptability
- Field fabricated fittings
- Offers a full compliment of styles, sizes, finishes and accessories

**Your ONE Source.**

# SOLUTION Cabinets



## Access Electronic Cabinets



Access Electronic Cabinets provide a unique patented design, allowing 360 degree accessibility. Available in two widths (19" – 23"), five heights (27RU – 47RU) and four depths (26 1/2" – 47 1/2"). Standard colors: black and light gray (other colors are available as a special order). 24" x 36" D.

PART No.	DESCRIPTION	MOUNT	FRONT	REAR	SIDE	COLOR
A4269A1NGSP3NB	42RU	19"	Glass	Solid	Plain	Black
A4769A1NGSP3NB	47RU	19"	Glass	Solid	Plain	Black

## E2 Next Generation Cabinets



The E2 Next Generation Cabinet system allows you to configure your own cabinet and choose from variety of compatible accessories. Available in two widths (19" – 23"), five heights (32RU – 52RU) and five depths (24" – 48").

Standard colors: black and light gray (other colors available as a special order).

24" W x 36" D.

PART No.	DESCRIPTION	MOUNT	FRONT	REAR	SIDE	COLOR
E46691N1PVSPF5B	46RU	19"	Acrylic	Vented	Solid	Black
E52691N1PVSPF5B	52RU	19"	Acrylic	Vented	Solid	Black

## E2 Seismic Zone 4 Cabinets

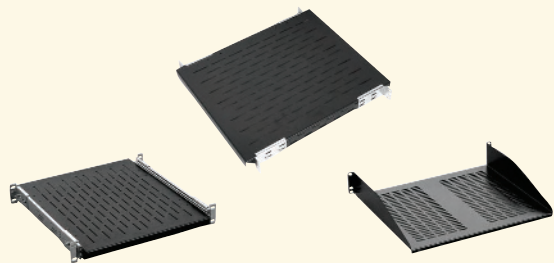


The E2 Seismic Zone 4 Cabinet offers certified protection in seismic locations.

Standard colors: black and light gray (other colors available as a special order).

PART No.	DESCRIPTION	MOUNT	COLOR
E2Z484243619BL	84" H x 24" W x 36" D	19"	Black
E2Z484244019BL	84" H x 24" W x 40" D	19"	Black
E2Z484293619BL	84" H x 29" W x 36" D	19"	Black
E2Z484294019BL	84" H x 24" W x 40" D	19"	Black

## Cabinet Shelves



PART No.	DESCRIPTION	DEPTH	COLOR
E2SHSS1920BLP	Sliding Shelf - Ventilated	20"	Black
E2SHSS1924BLP	Sliding Shelf - Ventilated	24"	Black
E2SHSS1930BLP	Sliding Shelf - Ventilated	30"	Black
E2SH4P1920BLP	Fixed Shelf - Ventilated	20"	Black
E2SH4P1924BLP	Fixed Shelf - Ventilated	24"	Black
E2SH4P1930BLP	Fixed Shelf - Ventilated	30"	Black
E2SHCLSLP1915PB	Cantilever Shelf	15"	Black

### Wall Mount Cabinets



All cabinets in the table below have a 19" mount, right hinge, plexiglass front and come in black. Cabinet options also include 20" depth, left hinge.

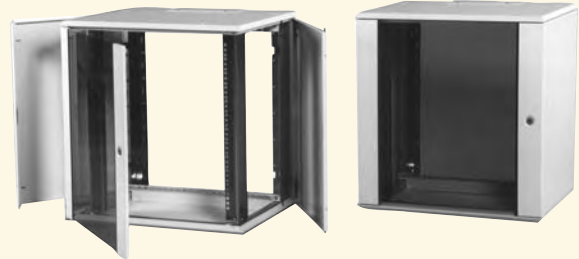
Standard colors are black, beige, light gray (other colors available as a special order). Call your Accu-Tech sales rep for more information.

<b>PART No.</b>	<b>DESCRIPTION</b>	<b>RU</b>
<b>E2WM242424DB</b>	24" H x 24" W x 24" D	11
<b>E2WM362424DB</b>	36" H x 24" W x 24" D	18
<b>E2WM482424DB</b>	48" H x 24" W x 24" D	25
<b>E2WM602424DB</b>	60" H x 24" W x 24" D	32
<b>E2WM242430DB</b>	24" H x 24" W x 30" D	11
<b>E2WM362430DB</b>	36" H x 24" W x 30" D	18
<b>E2WM482430DB</b>	48" H x 24" W x 30" D	25

#### FAN KIT

<b>PART No.</b>	<b>DESCRIPTION</b>
<b>E2FA2H210AC</b>	Fan Kit (Includes 2)

### V-Line Fixed Frame Wall Cabinets



Cooper B-Line V-Line Wall mount enclosures are a fully featured yet cost effective product.

Our EIA-310-D compliant design accepts standard networking gear safely and securely, holding up to 100 lbs of equipment

Features:

- Welded construction
- Removable, locking side panels
- Reversible, locking glass front door
- Cutouts for fans and adequate openings for venting

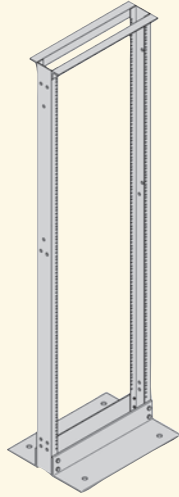
<b>PART No.</b>	<b>DESCRIPTION</b>	<b>RU</b>
<b>VWM242412</b>	24" H x 24" W x 12" D, Black	11
<b>VWM242418</b>	24" H x 24" W x 18" D, Black	11
<b>VWM362412</b>	36" H x 24" W x 12" D, Black	18
<b>VWM362418</b>	36" H x 24" W x 18" D, Black	18

# SOLUTION

## Relay Racks



### Relay Racks



Cooper B-Line offers a comprehensive line of aluminum, two-post relay racks designed to support patch panels, cable management and networking gear. All racks are EIA-310-D compliant and feature universal hole spacing (5/8", 5/8", 1/2") #12-24 tapped mounting holes. SB556 series racks feature permanent RMU markings, a UL1863 listing, self-squaring assembly and an industry leading 1,200 lb load capacity. All racks are individually packaged in a protective carton unassembled. Call your Accu-Tech sales rep for more information.

PART No.	DESCRIPTION	RU
SB556036XUFB	36" Relay Rack, Universal Spacing	17
SB556048XUFB	48" Relay Rack, Universal Spacing	24
SB556072XUFB	72" Relay Rack, Universal Spacing	38
SB556084XUFB	84" Relay Rack, Universal Spacing	45
SB556096XUFB	96" Relay Rack, Universal Spacing	51

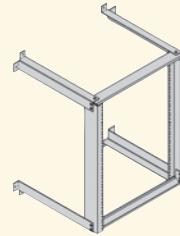
### 4 Post Racks

Cooper B-Line offers two types of four post racks – tapped hole and square hole. SB830 series racks are made from aluminum with #12-24 tapped 19" EIA mounting, permanent RMU markings and have a 2,000 lb load rating. SB836 series server racks are made of steel and aluminum with EIA universal hole pattern square punched mounting holes for cage nuts, permanent RMU markings and have a 1,000 lb load rating. Multiple depths, heights and finishes available in each rack series.

Individually packaged in a protective carton unassembled.

PART No.	HEIGHT	MOUNT	DEPTH	RU
SB8301908430FB	84"	19"	30"	45
SB8361908429FB	84"	19"	29"	84
SB8361908436FB	84"	19"	36"	84

### Wall-Mounted Relay Rack



Designed for applications where limited space is available. Racks listed below have a 19" mount, 12" depths and come in flat black. Also available with a 23" mount and in 6" and 18" depths. Other colors available: telco gray powder coat - TG, computer white powder coat - CW and brushed - AL. Contact your Accu-Tech sales rep for more information.

PART No.	HEIGHT	RU
SB70219252FB	25"	14
SB702193912FB	39"	22
SB702197412FB	74"	42

### Swing-Gate Wall Mounted Racks



#### LEFT AND RIGHT DUAL HINGE SYSTEM

Cooper B-Line's SB706 series swing gate racks allows the user to open the rack to the left or right, providing convenient access to the rear of rack mounted equipment. SB706 series racks are rated for 75 lb of load. Strut based design is sturdy, offering strength and simple installation. Available in multiple heights, depths and finishes.

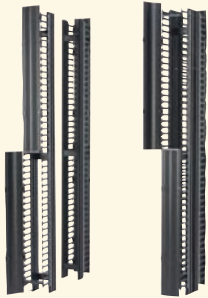
PART No.	HEIGHT	RU
SB706191612FB	16"	6
SB706192412FB	24"	11
SB706193812FB	38"	19
SB706194912FB	49"	25

#### B708 SERIES NEW HEAVY-DUTY SWING GATE RACK

Cooper B-Line's New SB708 series 19" wide swing gate racks allows the user to open the rack to the left or right, providing convenient access to the rear of rack mounted equipment. SB708 series racks are UL listed and rated for 150 lb of load. One piece back design yields quick and simple installation. Available in multiple heights, depths and finishes.

PART No.	HEIGHT	DEPTH	RU
SB708193018FB	30"	18"	13
SB708194418FB	44"	18"	21
SB708193025FB	30"	25"	13
SB708194425FB	44"	44"	21

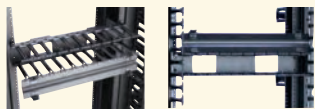
## RCM+ Vertical Cable Managers— Single- and Double-Sided SB-860 Series with Covers



Designed for use with industry standard relay racks and provides flexible cable pathway management solutions. Listed below are 84" high and 18 5/8" deep double-sided high-density vertical managers, flat black finish. Also available for 66" to 108" high racks, low density and other combinations. Silver powder coated also available, call your Accu-Tech sales rep for ordering information.

PART No.	DESCRIPTION
SB86083S084FB	Vertical Cable Manager 3 5/8" Wide, Single-sided, Black
SB86086S084FB	Vertical Cable Manager 6" Wide, Single-sided, Black
SB860810S084FB	Vertical Cable Manager 10" Wide, Single-sided, Black
SB860812S084FB	Vertical Cable Manager 12" Wide, Single-sided, Black

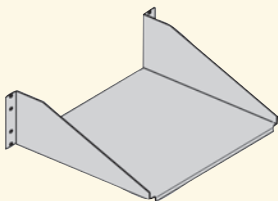
## SB-870+ Horizontal Cable Manager



All managers in the chart below are 19" mount and come with flat black finish. Also available in 23" mount. Silver powder coated finish is also available.

PART No.	RU
SB87019D1FB	1
SB87019D2FB	2
SB87019D3FB	3

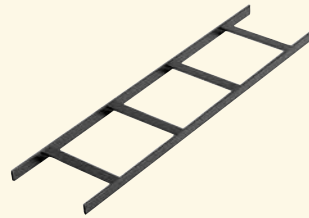
## Rack Shelves



These aluminum and steel rack shelves feature a single-sided, shelf-ventilated surface. Their capacity is 100 lbs and the color is black. Also available in 23" mount and solid surface versions; other colors available: light gray - TC, and silver - SL, please call your Accu-Tech rep for assistance with these options

PART No.	DEPTH	DESCRIPTION
SB747V1910SFB	10"	Steel
SB747V1915SFB	15"	Steel

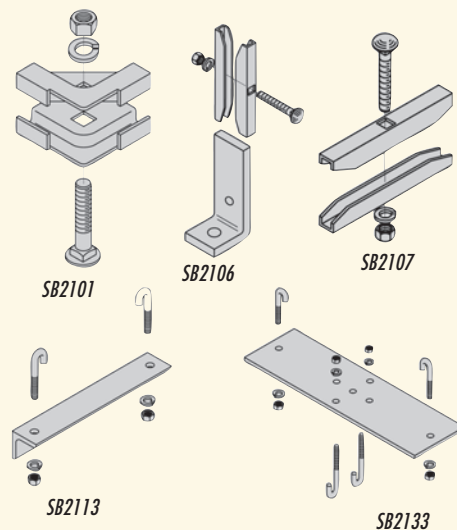
## Cable Runway



Tubular cable runway, individually boxed. Length is 9' 11 1/2", color, black. Also available un-boxed. Other colors available: yellow zinc and telco gray. Contact your Accu-Tech sales rep for ordering information.

PART No.	DESCRIPTION
SB1712FB	Tubular Stringer/Rung, 12" W x 9' 11-1/2" L, Flat Black
SB1718FB	Tubular Stringer/Rung, 18" W x 9' 11-1/2" L, Flat Black
SB1720FB	Tubular Stringer/Rung, 20" W x 9' 11-1/2" L, Flat Black

## Cable Runway Accessories



PART No.	DESCRIPTION	COLOR
SB-2101-A-BZN	Horizontal Tee Splice Kit	Black Zinc
SB-2106-A-BZN	End (Foot) Support Kit	Black Zinc
SB-2107-BZN	Straight Junction Kit	Black Zinc
SB-2113-12-FB	12" Wide Runway Support Kit,	Black
SB-2113-18-FB	18" Wide Runway Support Kit,	Black
SB-2133-12-FB	12" Relay Rack Support Kit,	Black

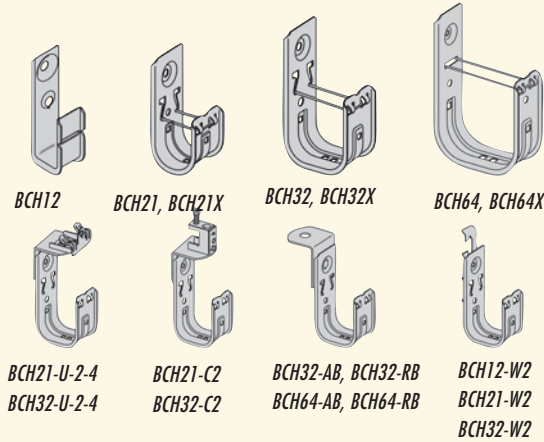
Note: yellow zinc and telco gray also available.

# SOLUTION Fasteners



## Spring Steel Fasteners-Cable Hooks

B-Line cable hooks with exclusive Quick-Latch cable retainers provide secure cable support and containment. Xylan coating provides "frictionless" cable pulling surface.



PART No.	DESCRIPTION
BCH12	3/4" Cable Hook
BCH12-W2	3/4" Cable Hook With Rod Fastener
BCH21	1-5/16" Cable Hook
BCH21X	1-5/16" Cable Hook, Xylan-Coated
BCH21-C2	1-5/16" Cable Hook Screw Type Beam Clamp
BCH21-W2	1-5/16" Cable Hook With Rod Fastener
BCH21-U-2-4	1-5/16" Cable Hook With Hammer On Clamp 1/8" - 1/4" Beam
BCH32	2" Cable Hook
BCH32X	2" Cable Hook, Xylan-Coated
BCH32-AB	2" Cable Hook With All Thread Rod Fastener
BCH32-C2	2" Cable Hook With Beam Clamp Screw Type
BCH32-RB	2" Cable Hook With Angle Bracket
BCH32-U-2-4	2" Cable Hook With Beam Clamp Hammer On Type
BCH32-W2	2" Cable Hook With Rod Fastener
BCH64	4" Cable Hook
BCH64X	4" Cable Hook, Xylan-Coated
BCH64-AB	4" Cable Hook With All Thread Rod Fastener

## Painted Cable Hooks



Powder coated cable hooks available in eight colors to meet latest cable identification requirements.

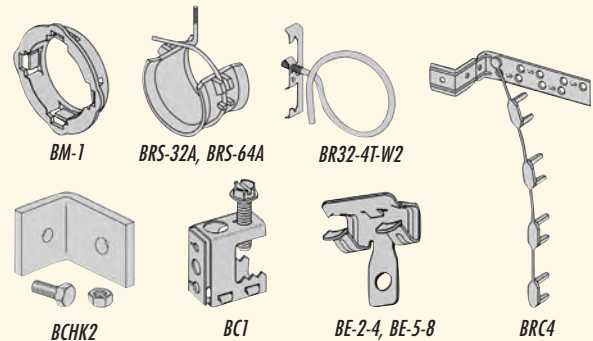
Painted cable hooks are also available riveted in combination with other fasteners.

Minimum order quantity: 500 pieces

PART No.	DESCRIPTION
BCH12**	3/4" Cable Hook, Capacity 10 - CAT 6 cables
BCH21**	1-5/16" Cable Hook, Capacity 32 - CAT 6 cables
BCH32**	2" Cable Hook, Capacity 50 - CAT 6 cables
BCH64**	4" Cable Hook, Capacity 185 - CAT 6 cables

Note: \*\* Finish designations: Bright White - BW, Equipment Blue - BL, Safety Yellow - YL, Brown - BR, Regal Red - RR, Orange - OR, Telecom Gray - TG, Green - GR

## Spring Steel Fasteners, Miscellaneous

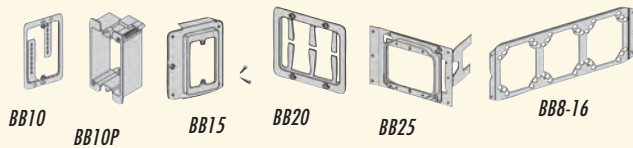


PART No.	DESCRIPTION
BC1	Beam Clamp For 1/4" Or 3/8" Rod
BCHK2	Angle Bracket Kit
BE-2-4	Flange Beam Fasteners 1/8" To 1/4"
BE-5-8	Flange Beam Fasteners 5/16" To 1/2"
BM1	Metal Stud Plastic Grommet
BR-16-3W	Bridle Ring 1" Ring With 1/4" Thread Size Lag Screw For Wood

### Spring Steel Fasteners, Miscellaneous (Continued)

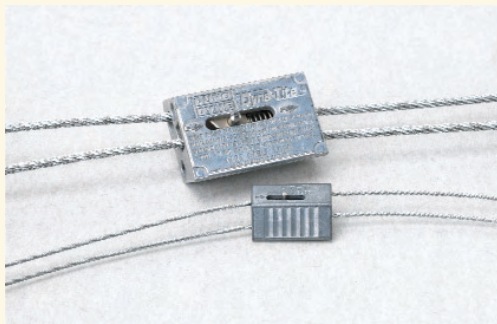
PART No.	DESCRIPTION
BR-20-4T	Bridle Ring 1 1/4" Ring With 1/4" Thread Size
BR-24-4W	Bridle Ring 1 1/2" Ring With 1/4" Thread Size Lag Screw For Wood
BR-32-4T	Bridle Ring 2" Ring With 1/4" Thread Size
BR-32-4T-W2	Bridle Ring 2" Ring With 1/4" Thread Size And With Rod Fasteners
BR-32-4W	Bridle Ring 2" Ring With 1/4" Thread Size Lag Screw For Wood
BR-64-4T	Bridle Ring 4" Ring With 1/4" Thread Size
BRC4	Staple-Lok Multi-Purpose Cable Support
BRS-32A	Bridle Ring 2" With Non-Metallic Saddle
BRS-64A	Bridle Ring 4" With Non-Metallic Saddle

### Wall Mount Brackets



PART No.	DESCRIPTION
BB10	Single Gang Box Eliminator Bracket
BB10L	Single Gang Box Eliminator Bracket With Screws
BB10P	Single Gang Box Eliminator Bracket Non-Metallic
BB15	Single Gang Stud Mounted Cover Plate Bracket
BB20L	Double Gang Box Eliminator Bracket With Screws
BB25	Double Gang Stud Mounted Cover Plate Bracket
BB8-16	Box Mounting Bracket For 16" Stud Spacing

### Cooper B-Line KwikWire



KwikWire system is designed to provide an economical alternative to jack chain and threaded rod when supporting wire basket and other cable support systems. Simple height adjustments are made by releasing locking tab, no tools required. Wire can be field cut to size, reducing waist and up front planning. KwikPak includes supply of clamps and spool of wire.

### Cooper B-Line KwikWire (Continued)

PART No.	DESCRIPTION
BKP10063	KwikPak Includes 100 pcs BKC100 And Spool Of 1/16" Wire Rope (500 ft)
BKP10094	KwikPak Includes 100 pcs BKC100 And Spool Of 3/32" Wire Rope (500 ft)
BKP15094	KwikPak Includes 100 pcs BKC150 And Spool Of 3/32" Wire Rope (500 ft)
BKP15125	KwikPak Includes 100 pcs BKC150 And Spool Of 1/8" Wire Rope (500 ft)
BKP20115	KwikPak Includes 50 pcs BKC200 And Spool Of 1/8" Wire Rope (500 ft)
BKP20188	KwikPak Includes 50 pcs BKC200 And Spool Of 3/16" Wire Rope (250 ft)
BKC100	KwikWire Clamp For 1/16" And 3/32" Wire Rope, Wire Basket Support
BKC150	KwikWire Clamp for 3/32" And 1/8" Wire Rope
BKC200	KwikWire Clamp for 1/8" And 3/16" Wire Rope
BKW063	KwikWire Wire Rope 1/16" (500 ft)
BKW094	KwikWire Wire Rope 3/32" (500 ft)
BKW125	KwikWire Wire Rope 1/8" (500 ft)
BKW188	KwikWire Wire Rope 3/16" (250 ft)



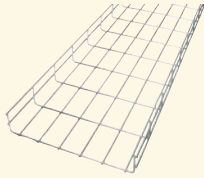


# SOLUTION

## Wire Baskets



### Wire Basket System

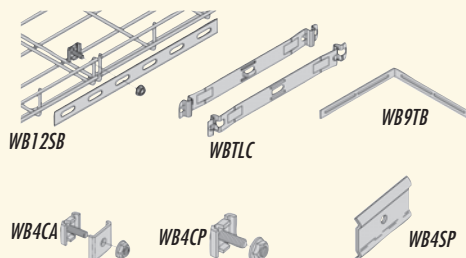


Cooper B-Line's Wire Basket Cable Tray System is designed for cable support in the customer premise environment. B-Line's Wire Basket combines support, strength, lightweight construction, cable fill depth, and unmatched adaptability to site conditions, making Wire Basket a fast and economical system to install. With our patented rung end wire design, heavy-duty zinc (silver SC2) coating and strong straight top wire design, your best choice for Wire Basket. Length: 118".

PART No.	DESCRIPTION	WIDTH
WB202	2" Deep Wire Basket Cable Tray	2"
WB204	2" Deep Wire Basket Cable Tray	4"
WB206	2" Deep Wire Basket Cable Tray	6"
WB208	2" Deep Wire Basket Cable Tray	8"
WB212	2" Deep Wire Basket Cable Tray	12"
WB218	2" Deep Wire Basket Cable Tray	18"
WB221	2" Deep Wire Basket Cable Tray	21"
WB224	2" Deep Wire Basket Cable Tray	24"
WB408	4" Deep Wire Basket Cable Tray	8"
WB412	4" Deep Wire Basket Cable Tray	12"
WB418	4" Deep Wire Basket Cable Tray	18"
WB421	4" Deep Wire Basket Cable Tray	21"
WB424	4" Deep Wire Basket Cable Tray	24"
WB612	6" Deep Wire Basket Cable Tray	12"
WB618	6" Deep Wire Basket Cable Tray	18"
WB620	6" Deep Wire Basket Cable Tray	20"
WB624	6" Deep Wire Basket Cable Tray	24"

Note: Available in other materials and finishes.

### Wire Basket Splices

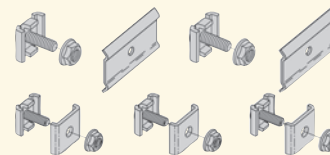


PART No.	DESCRIPTION
WB12SB	Splice Bars For 200/400 Series Wire Basket
WB43SK	Splice Plate Kits For WB200 Series Wire Basket
WB44SK	Splice Plate Kits For WB400 And WB600 Series Wire Basket In 8" to 12" Widths

### Wire Basket Splices (Continued)

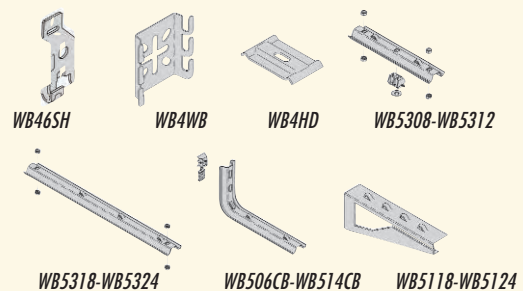
PART No.	DESCRIPTION
WB45SK	Splice Plate Kits For WB400 And WB600 Series Wire Basket In 18" To 24" Widths
WB4CA	Zinc Plated Connector Assembly
WB4CP	Zinc Plated Clamp Assembly
WB4SP	Splice Plate (Hardware Not Included)
WB9TB	Tee Bar
WB-TLC	Tab-lock Connector

### Wire Basket Splice Kits



PART No.	DESCRIPTION
WB43SK	Splice Plate Kits For WB200 Series
WB44SK	Splice Plate Kits For WB400 And WB600 Series In 8"-12" Widths
WB45SK	Splice Plate Kits For WB400 And WB600 Series In 18"-24" Widths

### Wire Basket Supports

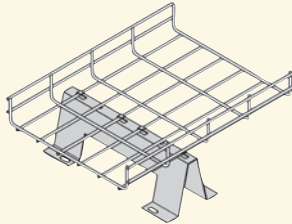


PART No.	DESCRIPTION
WB4SH	Snap Hanger
WB4WB	Wall Bracket And Box Mount Plate
WB4HD	Hold Down Plate
WB5308	Center Hanger/Trapeze Kit For 8" Wide Basket
WB5312	Center Hanger/Trapeze Kit For 12" Wide Basket
WB5318	Trapeze Kit For 18" Width
WB5324	Trapeze Kit For 20" To 24" Widths
WB506CB	Wall Click Brackets For 4" Width
WB508CB	Wall Click Brackets For 6" Width
WB510CB	Wall Click Brackets For 8" Width
WB514CB	Wall Click Brackets For 12" Width
WB5118	Wall Click Brackets For 18" Width
WB5124	Wall Click Brackets For 20 To 24" Widths
9ZN-5212WB	Wire Basket Cable Support
B19918	18" Slotted Wall Bracket

www.b-line.com  
www.accu-tech.com

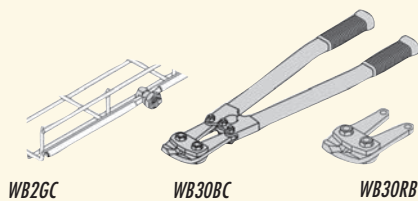
Accu-Tech  
Today's Products, Tomorrow's Solutions

## Wire Basket Under Floor Stands



PART No.	DESCRIPTION
WB312-18UF	3" Elevation By 12" Wide
WB412-18UF	4" Elevation By 12" Wide
WB512-18UF	5" Elevation By 12" Wide
WB612-18UF	6" Elevation By 12" Wide

## Wire Basket Accessories



PART No.	DESCRIPTION
WB2GC	Grounding Clamp
WB30BC	24" Bolt Cutter
WB30RB	Replacement Blade For Bolt Cutters
WB4B-3M	4" Wire Basket Barrier

## Underfloor Wire Basket System



Cooper B-Line new F.A.S.T foldable and stackable underfloor tray support system with fewer parts requires no tools, simple to install. F.A.S.T can be installed before or after the raised floor is in place.

PART No.	DESCRIPTION	WIDTH
WB20624	2" Deep Wire Basket Cable Tray	6"
WB20648	2" Deep Wire Basket Cable Tray	6"
WB21224	2" Deep Wire Basket Cable Tray	12"
WB21248	2" Deep Wire Basket Cable Tray	12"
WB22024	2" Deep Wire Basket Cable Tray	20"

## Underfloor Wire Basket System (Continued)

PART No.	DESCRIPTION	WIDTH
WB22048	2" Deep Wire Basket Cable Tray	20"
WB40624	4" Deep Wire Basket Cable Tray	6"
WB40648	4" Deep Wire Basket Cable Tray	6"
WB41224	4" Deep Wire Basket Cable Tray	12"
WB41248	4" Deep Wire Basket Cable Tray	12"
WB42024	4" Deep Wire Basket Cable Tray	20"
WB42048	4" Deep Wire Basket Cable Tray	20"
WB60624	6" Deep Wire Basket Cable Tray	6"
WB60648	6" Deep Wire Basket Cable Tray	6"
WB61224	6" Deep Wire Basket Cable Tray	12"
WB61248	6" Deep Wire Basket Cable Tray	12"
WB62024	6" Deep Wire Basket Cable Tray	20"
WB62048	6" Deep Wire Basket Cable Tray	20"
WBUFLT	Flat Wire Basket Cable Tray	20"

## STANDS



PART No.	DESCRIPTION	WIDTH
WBU 1216	10"-16" High Wire Basket Stand	12"
WBU 1224	18"-24" High Wire Basket Stand	12"
WBU 1231	25"-31" High Wire Basket Stand	12"
WBU 2016	10"-16" High Wire Basket Stand	20"
WBU 2024	18"-24" High Wire Basket Stand	20"
WBU 2031	25"-31" High Wire Basket Stand	20"

## UNDERFLOOR STANDS



PART No.	DESCRIPTION
WBU 1203	3" High Under Floor Stand
WBU 1204	4" High Under Floor Stand
WBU 1205	5" High Under Floor Stand
WBU 2006	6" High Under Floor Stand