



## VERTICAL CABLE MANAGEMENT



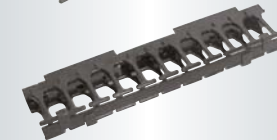
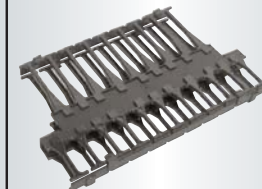
## HORIZONTAL CABLE MANAGEMENT



Double-Sided Version Shown



Double-Sided Version Shown



### MCS Master Cabling Section

MCS is a closed trough design available in single- and double-sided versions. Closed-trough design features large T-shape openings (fingers) that align with each rack-mount space (RMU) on the rack allowing cables to exit at the exact RMU where they connect to equipment. Openings are formed with rounded edges. Fingers will not break or deform during use. Additionally, a hinged latch-closure door provides protection for cables. Select from standard (24 cables/RMU) or extended (48 cables/RMU) fingers in three widths each.

### VCS Vertical Cabling Section

VCS is an open trough design available in single- and double-sided versions. Open-trough design allows large cable bundles to enter and exit the cable management space. Spin-latch closures secure cables. All surfaces in contact with cables are edge-protected. Select from two widths. Accessory Finger Snap™ Cable Guides provide retrofit by-RMU routing of patch cords. Covers also available as accessories.

### CCS Combination Cabling Section

CCS is a double-sided only combination of MCS-front and VCS-rear. CCS provides by-RMU cable management for patch cords with by-RMU cable fingers and a hinged latch-closure door on the front side. CCS provides easy routing for large bundles of premise cable with spin-latch closures and edge-protected openings on the rear side. Select from standard (24 cables/RMU) or extended (48 cables/RMU) fingers in three widths each. VCS accessories may be used on the rear side of the CCS.

### GVCS Global Vertical Cabling Section

GVCS is a cost-effective solution for smaller networks that need by RMU cable management. GVCS has cable management fingers that align with each rack-mount space (RMU) like MCS and CCS, but uses a snap-on cover instead of a hinged latch-closure door. GVCS is available in single- and double-sided versions. Single-sided versions may be used back-to-back for a solution similar to MCS or with accessory cable rings for a solution similar to CCS. Select from standard (24 cables/RMU) or extended (48 cables/RMU) fingers in two widths each. Cable Management Spools are also available as accessories.

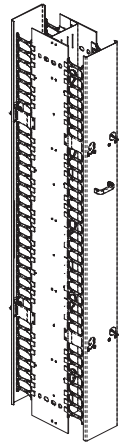
### Horizontal Wire Management

Open ring-style rack-mount cable managers complement the VCS Vertical Cabling Section. Use above and/or below patch panels or network switches to route patch cords to exact connection points on the rack. Horizontal Wire Managers feature a 1-1/2" standoff from the rack with 2-1/2" deep rings (4" deep overall) in two sizes. Covers are available as accessories. Alternately, use Jumper Trays with any cabling section to create a side-to-side or rack-to-rack pathway for patch cords.

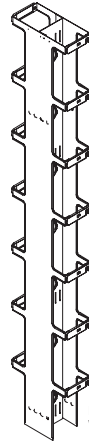
### Universal Horizontal Cable Manager

Closed trough-style rack-mount cable managers complement the MCS Master Cabling Section, CCS Combination Cabling Section, or GVCS Global Vertical Cabling Section. Use above or below patch panels or network switches to route patch cords to exact connection points on the rack. Universal Horizontal Cable Manager features T-shaped finger openings at the top and bottom of the trough and snap-on covers. Select from single- and double-sided versions in two depths and three heights.

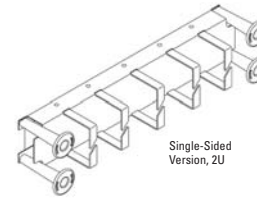
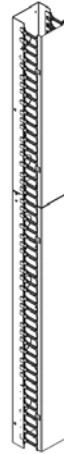
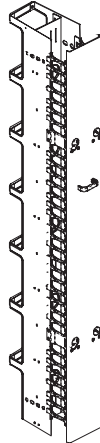
**Call 800-834-4969 for more information**



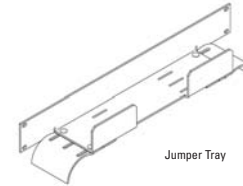
Double-Sided  
Version Shown



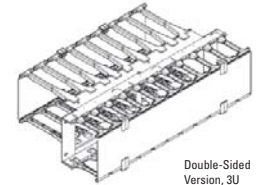
Double-Sided  
Version Shown



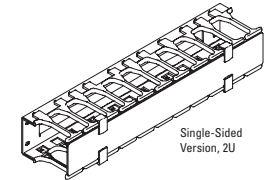
Single-Sided  
Version, 2U



Jumper Tray



Double-Sided  
Version, 3U



Single-Sided  
Version, 2U

### MCS Master Cabling Section

### VCS Vertical Cabling Sections

### CCS Combination Cabling Section

### GVCS Global Vertical Cabling Section

### Horizontal Wire Management

### Universal Horizontal Cable Manager

Part No.	Description	Wt.
30091-703	4.4"W x 7"H x 8.08"D Single-Sided, Black	17 lb
30092-703	6"W x 7"H x 8.08"D Single-Sided, Black	20 lb
30093-703	10"W x 7"H x 8.08"D Single-Sided, Black	45 lb
30094-703	4.4"W x 7"H x 16.15"D Double-Sided, Black	40 lb
30095-703	6"W x 7"H x 16.15"D Double-Sided, Black	45 lb
30096-703	10"W x 7"H x 16.15"D Double-Sided, Black	53 lb

Part No.	Description	Wt.
11730-703	3.65"W x 7"H x 6.38"D Single-Sided, Black	14 lb
11374-703	6"W x 7"H x 6.38"D Single-Sided, Black	16 lb
12096-703	3.65"W x 7"H x 12.75"D Single-Sided, Black	25 lb
11729-703	6"W x 7"H x 12.75"D Double-Sided, Black	27 lb

Contact Tech Support at 800-834-4969 for additional options.

Part No.	Description	Wt.
30161-703	3.65"W x 7"H x 12.24"D Double-Sided, Black	29 lb
30162-703	6"W x 7"H x 12.24"D Double-Sided, Black	34 lb
30163-703	10"W x 7"H x 12.24"D Double-Sided, Black	46 lb

Contact Tech Support at 800-834-4969 for additional options.

Part No.	Description	Wt.
12830-703	3.65"W x 7"H x 6.76"D Single-Sided, Black	16 lb
12831-703	6"W x 7"H x 6.76"D Single-Sided, Black	19 lb
14830-703	3.65"W x 7"H x 13.52"D Double-Sided, Black	32 lb
14831-703	6"W x 7"H x 13.52"D Double-Sided, Black	39 lb

Part No.	Description	Wt.
13070-719	19"W x 1U, 4"D Single-Sided, Black	2 lb
13075-719	19"W x 2U, 4"D Single-Sided, Black	2 lb

Contact Tech Support at 800-834-4969 for additional options.

Part No.	Description	Wt.
30139-719	19"W x 1U, 4.96"D Single-Sided, Black	2 lb
30130-719	19"W x 2U, 5.14"D Single-Sided, Black	3 lb
30131-719	19"W x 3U, 5.14"D Single-Sided, Black	4 lb
30339-719	19"W x 1U, 6.26"D* Single-Sided, Black	3 lb
30330-719	19"W x 2U, 6.44"D* Single-Sided, Black	4 lb
30331-719	19"W x 3U, 6.44"D* Single-Sided, Black	5 lb

### MCS - EFX Extended Fingers

Part No.	Description	Wt.
40092-703	6"W x 7"H x 10.62"D Single-Sided, Black	31 lb
40093-703	10"W x 7"H x 10.62"D Single-Sided, Black	40 lb
40094-703	12"W x 7"H x 10.62"D Single-Sided, Black	44 lb
40095-703	6"W x 7"H x 21.23"D Double-Sided, Black	55 lb
40096-703	10"W x 7"H x 21.23"D Double-Sided, Black	69 lb
40097-703	12"W x 7"H x 21.23"D Double-Sided, Black	75 lb

Note: Cable Spools are included with double-sided 10"W or 12"W MCS.

### Key Accessories

Part No.	Description	Wt.
12189-001	3.65"W Cover Smoked Acrylic	3 lb
12188-001	6"W Cover Smoked Acrylic	6 lb
12370-001	Finger Snaps™ Set of 2, Black	1 lb
12370-002	Finger Snaps™ Set of 12, Black	2 lb

### CCS - EFX Extended Fingers

Part No.	Description	Wt.
40098-703	6"W x 7"H x 14.94"D Double-Sided, Black	38 lb
40099-703	10"W x 7"H x 14.94"D Double-Sided, Black	52 lb
40100-703	12"W x 7"H x 14.94D Double-Sided, Black	56 lb

### Key Accessories

Part No.	Description	Wt.
15008-001	Cable Spools, 2.5"Dia. Set of 4, Black*	2 lb
12370-001	Finger Snaps™ Set of 2, Black	1 lb
12370-002	Finger Snaps™ Set of 12, Black	2 lb

\*Note: Cable Spools are for 10"W or 12" CCS or CCS-EFX.

### GVCS - EFX Extended Fingers

Part No.	Description	Wt.
12832-703	3.65"W x 7"H x 9.30"D Single-Sided, Black	18 lb
12833-703	6"W x 7"H x 9.30"D Single-Sided, Black	22 lb

### Key Accessories

Part No.	Description	Wt.
12836-701	3.65"W Cable Rings Set of 7, Black*	4 lb
12836-702	6"W Cable Rings Set of 7, Black	5 lb
12765-702	Cable Spools, 2" Dia. Set of 2, Black	2 lb
12765-706	Cable Spools, 2" Dia. Set of 6, Black	3 lb

Note: Cable Spools are for 6"W GVCS.

### Upper Jumper Tray

Part No.	Description	Wt.
12183-719	19"W x 2U, 3.5"D Black	3 lb
13183-719	19"W x 2U, 6"D Black	4 lb

### Key Accessories

Part No.	Description	Wt.
12663-701	Clip-On Cover, Black For 13070-719	1 lb
12663-702	Clip-On Cover, Black For 13075-719	1 lb

30529-719	19"W x 1U, 11.73"D Double-Sided, Black	5 lb
30530-719	19"W x 2U, 11.73"D Double-Sided, Black	6 lb
30531-719	19"W x 3U, 11.73"D Double-Sided, Black	7 lb

\*Note: Use deep panel models when MCS is center-mounted on Standard or Universal Rack. Other sizes and styles available. Contact Tech Support at 800-834-4969 for additional options.



CHATSWORTH PRODUCTS, INC.