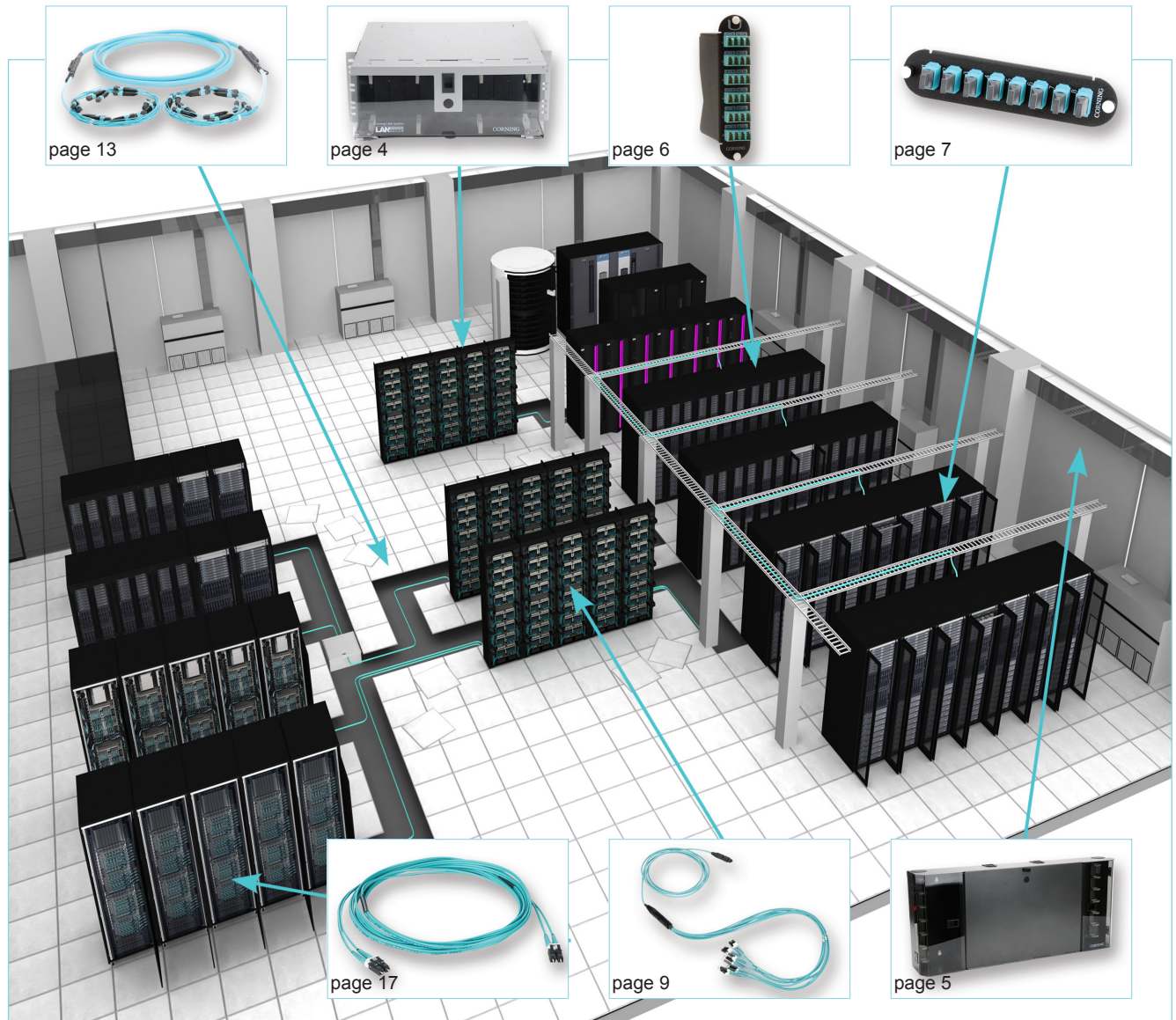


Plug & Play™ Universal Systems

A LANscape® Pretium®
Solutions Product

Plug & Play™ Universal Systems for Data Centers and Storage Area Networks (SANs)

Corning Plug & Play™ universal systems create a fiber optic tip-to-tip solution for data centers and storage area networks (SANs) consisting of housings, modules, panels, harnesses, trunks and jumpers.



Pretium EDGE Universal Solutions
| Drawing MM191

Features and Benefits

Universal wired modular system components

Enable moves, adds and changes (MACs) without polarity concerns; provide a simple migration path between two-fiber and parallel optics applications

Standard and low-loss components

Provide means of meeting increasingly stringent network performance requirements

Corning® ClearCurve® OM3 and OM4 fiber offers enhanced bend performance

Allows tighter cable routing without negatively impacting system performance

100G-ready performance

Ensures product will meet the requirements of 100G Ethernet applications

Parallel optics tested to a maximum skew of 0.75 nanoseconds

Ensures operation in high-data-rate Ethernet and InfiniBand applications

Reduced-diameter pulling grip

Enables deployment of the cables in a variety of ducts/ conduits sizes including MaxCell inner duct

High-density trunk cables

Allows for tighter trunk cable bends for slack storage and routing while maximizing space utilization in tray

100 percent round furcation legs

Eliminates preferential bend issues commonly associated with ribbon cables and furcation legs

Specifications

Connected Mated Pair				
	Insertion Loss			
	OM1	OM3/OM4, Standard	OM3/OM4, Low-loss	OS2, Ultra-bend
LC Reverse Polarity Uniboot	0.25 dB	0.25 dB	0.15 dB	0.5 dB
SC	0.25 dB	0.25 dB	0.15 dB	0.5 dB
MTP® Compatible Connector	0.5 dB	0.5 dB	0.35 dB	0.75 dB

Modules/Harnesses				
	Insertion Loss			
	OM1	OM3/OM4, Standard	OM3/OM4, Low-loss	OS2, Ultra-bend

Plug & Play™ Universal Systems

A LANscape® Pretium®
Solutions Product

Modules/Harnesses				
LC Reverse Polarity Uniboot	0.75 dB	0.75 dB	0.5 dB	1.3 dB
SC	0.75 dB	0.75 dB	0.5 dB	1.3 dB

	Integrated Trunk		
	Insertion Loss		
	OM1	OM3/OM4	OS2
LC Reverse Polarity Uniboot	0.75 dB	0.75 dB	1.3 dB
SC	0.75 dB	0.75 dB	1.3 dB

Plug & Play™ Universal Systems

A LANscape® Pretium®
Solutions Product

Rack-Mountable Pretium® Connector Housings

The rack-mountable Pretium® Connector Housings (PCH) are available in 1U, 2U and 4U sizes and mount in 19-in racks or cabinets. Combined with the modules, panels, harnesses, trunks and jumpers, they provide a tip-to-tip solution for your fiber optic network.



Ordering Information

Part Number	Height Unit	Dimensions (W x D x H)	Packaging Dimensions (W x D x H)	Shipping Weight	Number of Panels per Housing
PCH-01U	1U	432 mm x 406 mm x 44.45 mm (17 in x 16 in x 1.75 in)	615.9 mm x 508 mm x 120.7 mm (24.25 in x 20 in x 4.75 in)	5 kg (11 lb)	2
PCH-M3-01U	1U	426.72 mm x 323.85 mm x 44.45 mm (16.8 in x 12.75 in x 1.75 in)	511.3 mm x 438.15 mm x 120.65 mm (20.13 in x 17.25 in x 4.75 in)	1.75 kg (3.85 lb)	3

Plug & Play™ Universal Systems

A LANscape® Pretium®
Solutions Product

Ordering Information

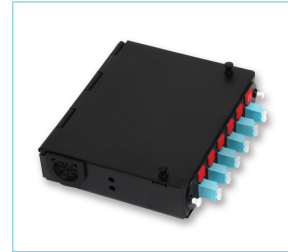
Part Number	Height Unit	Dimensions (W x D x H)	Packaging Dimensions (W x D x H)	Shipping Weight	Number of Panels per Housing
PCH-02U	2U	431.8 mm x 419.1 mm x 88.9 mm (17 in x 16.5 in x 3.5 in)	584.2 mm x 558.8 mm x 152.4 mm (23 in x 22 in x 6 in)	5.7 kg (12.6 lb)	4
PCH-04U	4U	431.8 mm x 406.4 mm x 177.8 mm (17 in x 16 in x 7 in)	562.1 mm x 482.6 mm x 279.4 mm (22.13 in x 19 in x 11 in)	7.5 kg (16.5 lb)	12

Plug & Play™ Universal Systems

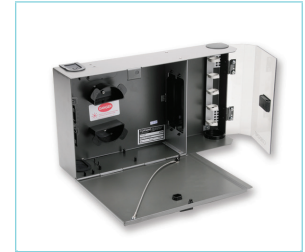
A LANscape® Pretium®
Solutions Product

Pretium® Wall-Mountable Housings

Pretium® Wall-mountable Housings (PWH) are available in 1, 2, 4, 6 and 12 panel/module sizes. Combined with the modules, panels, harnesses, trunks and jumpers, they provide a tip-to-tip solution for your fiber optic network.



SPH-01P
| Photo LAN2216



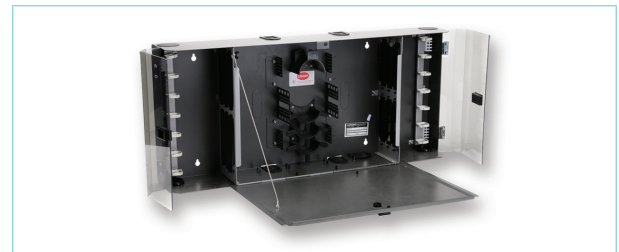
Pretium Wall-Mountable
Housing, PWH-02P



Pretium Wall-Mountable
Housing, PWH-04P



Pretium Wall-Mountable
Housing, PWH-06P



PWH-12P
| Photo LAN2938

Ordering Information

Part Number	Dimensions (W x D x H)	Packaging Dimensions (W x D x H)	Shipping Weight	Number of Panels per Housing
SPH-01P	160 mm x 139.7 mm x 50.8 mm (6.3 in x 5.5 in x 2 in)	196.85 mm x 171.45 mm x 54.10 mm (7.75 in x 6.75 in x 2.13 in)	0.5 kg (1 lb)	1
PWH-02P	444.5 mm x 101.6 mm x 238.76 mm (17.5 in x 4 in x 9.4 in)	543.05 mm x 387.35 mm x 234.95 mm (21.38 in x 15.25 in x 9.25 in)	5 kg (11 lb)	2
PWH-04P	533.4 mm x 134.62 mm x 365.76 mm (21 in x 5.3 in x 14.4 in)	685.8 mm x 596.9 mm x 342.9 mm (27 in x 23.5 in x 13.5 in)	10.4 kg (23 lb)	4

Plug & Play™ Universal Systems

A LANscape® Pretium®
Solutions Product

Ordering Information

Part Number	Dimensions (W x D x H)	Packaging Dimensions (W x D x H)	Shipping Weight	Number of Panels per Housing
PWH-06P	533.4 mm x 134.62 mm x 365.76 mm (21 in x 5.3 in x 14.4 in)	685.8 mm x 596.9 mm x 342.9 mm (27 in x 23.5 in x 13.5 in)	10.4 kg (23 lb)	6
PWH-12P	825.5 mm x 134.62 mm x 365.76 mm (32.5 in x 5.3 in x 14.4 in)	977.9 mm x 596.9 mm x 342.9 mm (38.5 in x 23.5 in x 13.5 in)	10.9 kg (24 lb)	12

Plug & Play™ Universal Systems

A LANscape® Pretium®
Solutions Product

Modules

Plug & Play™ Modules provide the interface between the MTP® Connector on the trunk and the LC or SC duplex jumpers that will then connect directly to the electronics. The LC duplex adapters feature hinged VFL-compatible shutters that move up and out of the way when the connector is inserted. Specially designed indents in the shutters ensure that the end faces of the connectors are never touched. These shutters replace the standard dust caps that typically once removed are never replaced, allowing the interior end faces to become dirty and possibly damaged.



Plug & Play Module
| Photo LAN1797

Ordering Information

C	C	H	-	U	M	<input type="text"/>	<input type="text"/>	-	<input type="text"/>	<input type="text"/>	-	<input type="text"/>	<input type="text"/>	<input type="text"/>
						1			2			3		4

- 1** Select fiber count.
12 = 12 fibers
24 = 24 fibers

- 2** Select adapters on front of module.
- Shuttered LC Duplex**
05 = Multimode (OM3/OM4)
04 = Single-mode (OS2)
18 = Single-mode (OS2) APC
- SC Duplex (12-fiber maximum)**
57 = Multimode (OM3/OM4)
72 = Single-mode (OS2)
66 = Single-mode (OS2) APC

- 3** Select pinned MTP Connector adapter on back of module.
- 70 = Standard-loss multimode (OM1/OM3/OM4)
93 = Low-loss multimode (OM3/OM4)
89 = Single-mode (OS2)
See Notes 1 and 2.

- 4** Select fiber type.
- K = Multimode (OM1)
T = Multimode (OM3)
Q = Multimode (OM4)
G = Single-mode (OS2)

1) In order to guarantee a low-loss system, use all low-loss components.

2) Low-loss available with SC duplex, LC duplex and MTP Connectors on OM3 and OM4 solutions only.

MTP® Adapter Panels

Plug & Play™ MTP® Adapter Panels provide a simple interface to connect trunk harnesses to trunks, standard trunks to extender trunks or can facilitate the use of 40G electronics.



Ordering Information

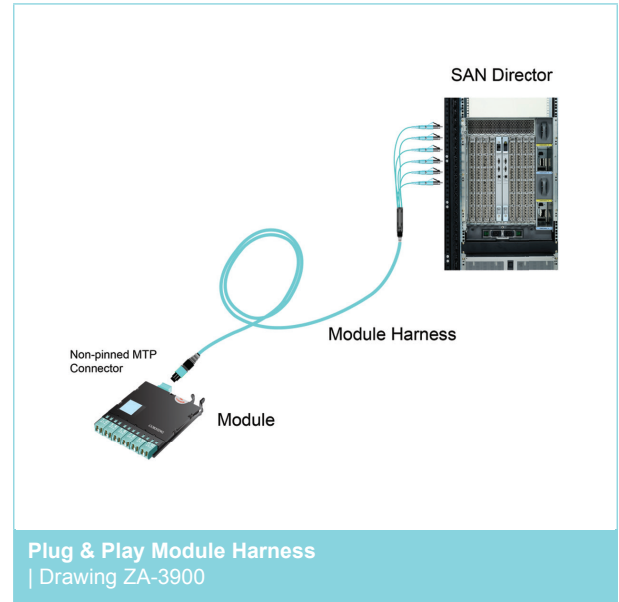
CCH-CP	<input type="text"/>	<input type="text"/>	-	<input type="text"/>	<input type="text"/>
	1			2	

- 1** Select fiber count.
- 36 = 3 MTP adapters
 - 72 = 6 MTP adapters
 - 96 = 8 MTP adapters
 - E4 = 12 MTP adapters (144-fibers)

- 2** Select fiber type.
- 69 = Multimode (OM1)
 - E3 = Multimode (OM3, OM4)
 - 90 = Single-mode (OS2)

Module Harnesses

The 12-fiber Plug & Play™ Module Harness is designed to create a cross-connect point near the electronics by enabling port replication. This cross-connection is possible with duplex LC or SC connectors to interface with the electronics and a MTP® Connector to connect into the back of a module. With port replication, your day-x after multiple MACs in front of the electronics looks the same as day one.



Ordering Information

H	<input type="text"/>	<input type="text"/>	<input type="text"/>	<input type="text"/>	1	2	<input type="text"/>	E 8	-	<input type="text"/>	W	<input type="text"/>	<input type="text"/>	<input type="text"/>	<input type="text"/>
	1	2					3			4		5			6

- 1** Select non-pinned MTP Connectors.
- 69 = Standard-loss multimode (OM1/OM3/OM4)
 - 75 = Low-loss multimode (OM3/OM4)
 - 90 = Single-mode (OS2)

- 2** Select breakout connector type.
- LC Duplex**
- 05 = Multimode (OM1/OM3/OM4)
 - 04 = Single-mode (OS2)
 - 15 = Single-mode (OS2) APC

- 2** Select breakout connector type (continued).
- SC Duplex**
- 57 = Multimode (OM1/OM3/OM4)
 - 72 = Single-mode (OS2)
 - 66 = Single-mode (OS2) APC

- 3** Select fiber type.
- K = Multimode (OM1)
 - T = Multimode (OM3)
 - Q = Multimode (OM4)
 - R = Single-mode (OS2)

- 4** Select leg length in inches (leg OD is 2.0 mm; -0/+3 in).
- J = 12 inches N = 60 inches
 - K = 24 inches P = 72 inches
 - L = 36 inches Q = 79 inches
 - M = 48 inches R = 96 inches

- 5** Select overall harness length (does not include leg length).

- 6** Select unit of measure.
- M = Meters
 - F = Feet

1) In order to guarantee a low-loss system, use all low-loss components.

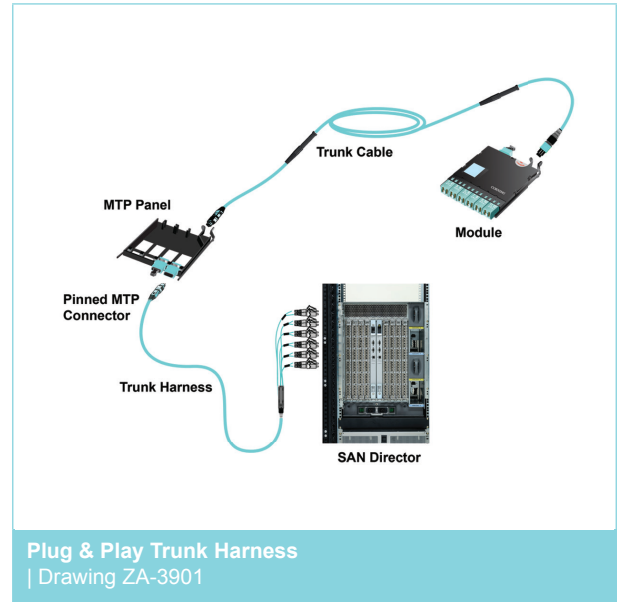
2) Low-loss available with SC duplex, LC duplex and MTP Connectors on OM3 and OM4 solutions only.

Plug & Play™ Universal Systems

A LANscape® Pretium®
Solutions Product

Trunk Harnesses

The 12-fiber Plug & Play™ Trunk Harnesses are designed to facilitate an interconnect point when the electronics are located in a separate area than the cross-connect or patching field. This interconnection is possible with duplex LC or SC connectors to interface with the electronics and a MTP® Connector to connect into a trunk.



Ordering Information

H	<input type="text"/>	<input type="text"/>	<input type="text"/>	<input type="text"/>	1	2	<input type="text"/>	E 8	-	<input type="text"/>	Z	<input type="text"/>	<input type="text"/>	<input type="text"/>	<input type="text"/>
	1	2					3			4			5		6

- 1** Select pinned MTP Connectors.
- 70 = Standard-loss multimode (OM1/OM3/OM4)
 - 93 = Low-loss multimode (OM3/OM4)
 - 89 = Single-mode (OS2)

- 2** Select breakout connector type.
- LC Duplex**
- 05 = Multimode (OM1/OM3/OM4)
 - 04 = Single-mode (OS2)
 - 15 = Single-mode (OS2) APC

- 2** Select breakout connector type (continued).
- SC Duplex**
- 57 = Multimode (OM1/OM3/OM4)
 - 72 = Single-mode (OS2)
 - 66 = Single-mode (OS2) APC

- 3** Select fiber type.
- K = Multimode (OM1)
 - T = Multimode (OM3)
 - Q = Multimode (OM4)
 - R = Single-mode (OS2)

- 4** Select leg length in inches (leg OD is 2.0 mm; -0/+3 in).
- J = 12 inches N = 60 inches
 - K = 24 inches P = 72 inches
 - L = 36 inches Q = 79 inches
 - M = 48 inches R = 96 inches

- 5** Select overall harness length (does not include leg length).

- 6** Select unit of measure.
- M = Meters
 - F = Feet

1) In order to guarantee a low-loss system, use all low-loss components.

2) Low-loss available with SC duplex, LC duplex and MTP Connectors on OM3 and OM4 solutions only.

Trunk Specifications

Approval and Listings

NFPA 262, National Electric Code® (NEC®), OFNP, CSA FT-6, ICEA S-83-596

Trunk Performance

EIA/TIA 568 C.3 – includes low/high temperature soak of -10/60°C, humidity testing at 90-95 percent at 40°C, connector durability (500 matings) and connector pull testing

Pulling Grip Performance

12-fiber trunks can be pulled up to 100 lbs using the pulling grip while 24- to 144-fiber trunks can be pulled up to 300 lbs using the pulling grip.

Mechanical Characteristics					
Fiber Count	Nominal Outer Diameter	Pulling Grip Outer Diameter	Weight	Min. Bend Radius Installation	Min. Bend Radius Operation
Non-Armored Cable Specifications					
12	5.5 mm ± 0.3 mm (0.22 in (± 0.01 in))	18.0 mm (0.7 in)	32 kg/km (21 lb/1000 ft)	82.5 mm (3.3 in)	27.5 mm (1.08 in)
24	7.7 mm ± 0.3 mm (0.30 in (± 0.01 in))	26 mm (1.0 in)	50 kg/km (34 lb/1000 ft)	115.5 mm (4.6 in)	38.5 mm (1.5 in)
48	8.5 mm ± 0.3 mm (0.33 in (± 0.01 in))	26 mm (1.0 in)	63 kg/km (42 lb/1000 ft)	127.5 mm (5.0 in)	42.5 mm (1.7 in)
72	10.5 mm ± 0.3 mm (0.41 in (± 0.01 in))	26 mm (1.0 in)	95 kg/km (64 lb/1000 ft)	157.5 mm (6.2 in)	52.5 mm (2.1 in)
96	11.9 mm ± 0.3 mm (0.47 in (± 0.01 in))	26 mm (1.0 in)	111 kg/km (74 lb/1000 ft)	178.5 mm (7.0 in)	59.5 mm (2.3 in)
144	12.5 mm ± 0.3 mm (0.49 in (± 0.01 in))	26 mm (1.0 in)	122 kg/km (82 lb/1000 ft)	187.5 mm (7.4 in)	62.5 mm (2.5 in)
Armored Cable Specifications					
12 - 48	17.3 mm (± 1.5 mm) (0.68 in (± 0.06 in))	44 mm (1.75 in)	209 kg/km (140 lb/1000 ft)	173 mm (6.8 in)	260 mm (10.2 in)
72	19.9 mm (± 1.5 mm) (0.78 in (± 0.06 in))	44 mm (1.75 in)	273 kg/km (183 lb/1000 ft)	199 mm (7.8 in)	299 mm (11.8 in)
96	23.2 mm (± 1.5 mm) (0.91 in (± 0.06 in))	76 mm (3 in)	403 kg/km (270 lb/1000 ft)	232.0 mm (9.1 in)	348.0 mm (13.7 in)
144	24.5 mm (± 1.5 mm) (0.96 in (± 0.06 in))	76 mm (3 in)	439 kg/km (294 lb/1000 ft)	245 mm (9.7 in)	368 mm (14.5 in)

Trunk Shipping Information

Non-Armored Trunks, Extender Trunks and Hybrid Trunks						
Packaging Method	Box E	Reel 1	Reel 2	Reel 3	Reel W	Reel Z
Packaging Material	Corrugated box	Plastic reel	Plastic reel	Plastic reel	Plywood reel	Plywood reel
Reel Diameter (in)		23.5	23.5	23.5	36	41
Reel Width (in)		5	12	18	32	32
Box Dimensions (in)	21x21x3.3	26x25.5x7	26x25.5x14	26x25.5x20	-	-
Fiber Count	Capacities (ft)					
12	10-29	30-1178	1179-2500	-	-	-
24	10-29	30-601	602-1442	1443-2163	2164-2500	-
36	10-29	30-557	558-1336	1337-2004	2005-2500	-
48	10-29	30-493	494-1183	1184-1775	1776-2500	-
72	10-29	30-323	324-776	777-1163	1164-2106	2107-2500
96	10-29	30-252	253-604	605-906	907-1639	1640-2500
144	10-29	30-228	229-547	548-821	822-1486	1487-2500

Note: Trunks under 30 ft are shipped in a cardboard box and not on a reel.

Armored Trunks, Extender Trunks and Hybrid Trunks								
Packaging Method	Reel 1	Reel 2	Reel 3	Reel N	Reel Q	Reel T	Reel Z	Reel 4
Packaging Material	Plastic reel	Plastic reel	Plastic reel	Corrugated reel	Plywood reel	Plywood reel	Plywood reel	Plywood reel
Reel Diameter (in)	23.5	23.5	23.5	30	27	30	41	48
Reel Width (in)	5	12	18	7	36	16	32	36
Box Dimensions (in)	26x25.5x7	26x25.5x14	26x25.5x20	31x31.5x32	-	-	-	-
Fiber Count	Capacities (ft)							
12	10-149	150-358	359-537	538-636	637-723	724-1443	1444-2500	-
24	10-62	63-150	151-225	226-266	267-303	304-605	606-1629	1630-2500
36	10-62	63-150	151-225	226-266	267-303	304-605	606-1629	1630-2500
48	10-62	63-150	151-225	226-266	267-303	304-605	606-1629	1630-2500
72	10-47	48-113	114-170	171-201	202-229	230-457	458-1231	1232-2500
96	10-34	35-83	84-125	126-148	149-168	169-336	337-906	907-2319
144	10-31	32-74	75-112	113-132	133-151	152-301	302-812	813-2080

Note: Trunks under 30 ft are shipped in a cardboard box and not on a reel.

Transmission Performance

Fiber Type	Multimode	Multimode	Multimode	Single-mode
Fiber Core Diameter (µm)	62.5	50	50	8.2
Fiber Category	OM1	OM3	OM4	OS2
Fiber Code	K	T	Q	G
Performance Option Code	30	80	90	01
Wavelengths (nm)	850/1300	850/1300	850/1300	1310/1383/1550
Maximum Attenuation (dB/km)	3.4/1.0	2.8/1.0	2.8/1.0	0.4/0.4/0.3
Serial 1 Gigabit Ethernet (m)	300/550	1000/600	1100/600	5000/-/-
Serial 10 Gigabit Ethernet (m)	33/-	300/-	550/-	10000/-/40000
Min. Overfilled Launch (OFL) Bandwidth (MHz*km)	200/500	1500/500	3500/500	-
Minimum Effective Modal Bandwidth (EMB) (MHz*km)	220/-	2000/-	4700/-	-
Induced Attenuation @ 7.5 mm Radius (dB)	-	< 0.2up to80	< 0.2up to80	-

* ITU-T G.652 D compliant.

* Meets 0.75 ns optical skew when used in all Corning Plug and Play™/Pretium EDGE® systems solutions.

* Assumes 1.0 dB maximum total connector/splice loss.

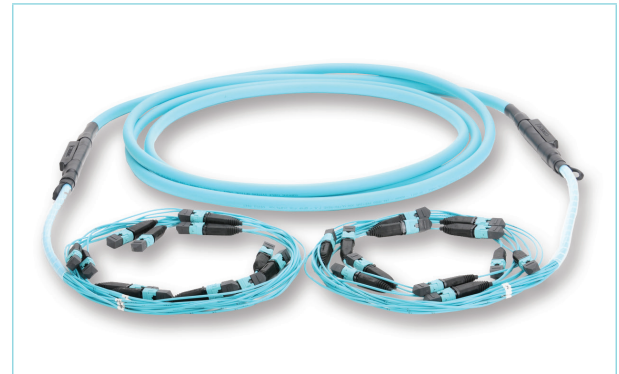
- Notes:
- 1) Improved attenuation and bandwidth options available.
 - 2) Bend-insensitive single-mode fibers available on request.
 - 3) 50 µm multimode fiber macrobend loss ≤ 0.2 dB at 850 nm for two turns around 7.5 mm radius mandrel.
 - 4) Contact a Corning Customer Care Representative for additional information.

Plug & Play™ Universal Systems

A LANscape® Pretium®
Solutions Product

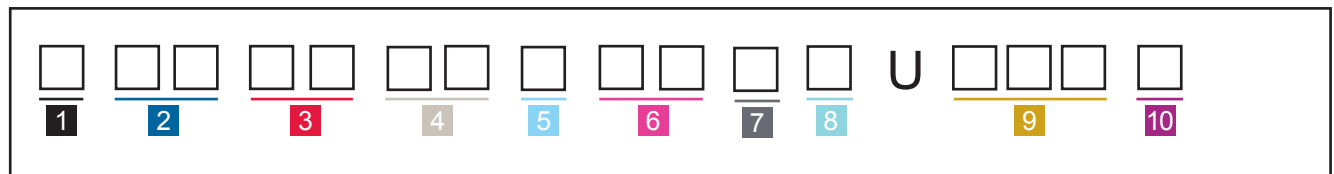
MTP® Trunks

Plug & Play™ Universal Systems MTP® Trunks provide the backbone of the Plug & Play System. With non-pinned MTP Connectors on both ends of the cable, these trunks are designed to interface with the Plug & Play Universal modules. All trunks are shipped with strain-relief clips that allow for the tool-less installation into both Pretium EDGE® and Plug & Play housings. These trunks conform to TIA-568 Type-B polarity.



Plug & Play MTP Trunks
| Photo LAN2727

Ordering Information



1 Select grip applications.
A = Grip on first end only
N = No grip

2 Select non-pinned MTP Connectors (end one or outside of reel).
69 = 62.5 μm multimode (OM1)
75 = 50 μm multimode (OM3/OM4)
90 = Single-mode (OS2)

3 Select non-pinned MTP Connectors (end two or inside of reel).
69 = 62.5 μm multimode (OM1)
75 = 50 μm multimode (OM3/OM4)
90 = Single-mode (OS2)

4 Select standard fiber count.
12 = 12 fibers 72 = 72 fibers
24 = 24 fibers 96 = 96 fibers
36 = 36 fibers E4 = 144 fibers
48 = 48 fibers

5 Select fiber type.
K = 62.5 μm multimode (OM1)
T = 50 μm multimode (OM3)
Q = 50 μm multimode (OM4)
G = Single-mode (OS2)

6 Select cable type.
PN = Non-armored plenum
AD = Armored plenum
See Note 1.

7 Select leg length on end one or outside of reel.
A = 24 in minimum stagger (+5/-0 in)
B = 36 in minimum stagger (+5/-0 in)
See Notes 2 and 3.

8 Select leg length on end two or inside of reel.
A = 24 in minimum stagger (+5/-0 in)
B = 36 in minimum stagger (+5/-0 in)
See Notes 2 and 3.

9 Select cable length (measured from furcation to furcation).
001-999

10 Select unit of measure.
M = Meters
F = Feet

1) Contact a Corning Customer Care Representative for non-standard indoor and outdoor cable offerings.

2) Furcation legs are color coded by fiber type: K = Orange; T and Q = Aqua; G = Yellow.

3) Furcation legs are staggered with the shortest stagger length noted as the minimum length.

4) Plug & Play Universal Systems CCH Modules contain fibers configured in the Universal Wiring Scheme and must be mated to Plug & Play Universal Systems MTP Connector trunks.

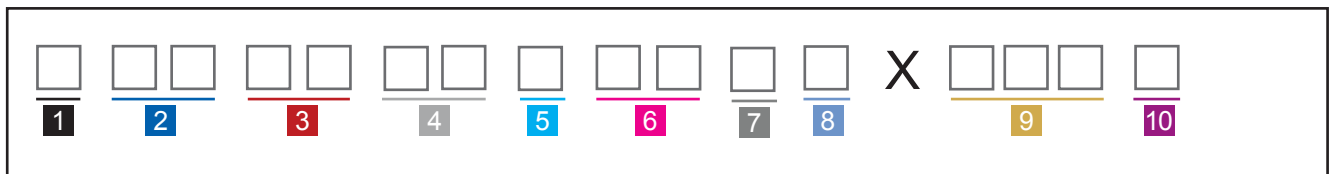
Extender Trunks

Plug & Play™ Universal Systems Extender Trunks are used to distribute portions, or all, of the fibers in a Plug & Play Universal Systems trunk to other areas in the infrastructure. For example, a high-fiber-count trunk can be deployed from a main distribution area (MDA) to a zone distribution area (ZDA). Lower-fiber-count extender trunks can then be utilized to distribute fiber from the ZDA into cabinets.



Plug & Play Extender Trunks
| Photo LAN2777

Ordering Information



1 Select grip applications.
A = Grip on first end only
N = No grip

2 Select pinned MTP Connectors (end one or outside of reel).
70 = 62.5 µm multimode (OM1)
93 = 50 µm multimode (OM3/OM4)
89 = Single-mode (OS2)

3 Select non-pinned MTP Connectors (end two or inside of reel).
69 = 62.5 µm multimode (OM1)
75 = 50 µm multimode (OM3/OM4)
90 = Single-mode (OS2)
See Note 1.

4 Select standard fiber count.
12 = 12 fibers 72 = 72 fibers
24 = 24 fibers 96 = 96 fibers
36 = 36 fibers E4 = 144 fibers
48 = 48 fibers

5 Select fiber type.
K = 62.5 µm multimode (OM1)
T = 50 µm multimode (OM3)
Q = 50 µm multimode (OM4)
G = Single-mode (OS2)

6 Select cable type.
PN = Non-armored plenum
AD = Armored plenum
See Note 2.

7 Select leg length on end one or outside of reel.
A = 24 in minimum stagger (+5/-0 in)
B = 36 in minimum stagger (+5/-0 in)
See Notes 3 and 4.

8 Select leg length on end two or inside of reel.
See options from Item 7.

9 Select cable length (measured from furcation to furcation).
001-999

10 Select unit of measure.
M = Meters
F = Feet

1) Extender trunks have pinned MTP Connectors on one end and non-pinned MTP Connectors on the other end. Attempting to mate two pinned MTP Connectors or two nonpinned MTP Connectors will not produce the desired optical performance.

2) Contact a Corning Customer Care Representative for non-standard indoor and outdoor cable offerings.

3) Furcation legs are color coded by fiber type: K = Orange; T and Q = Aqua; G = Yellow.

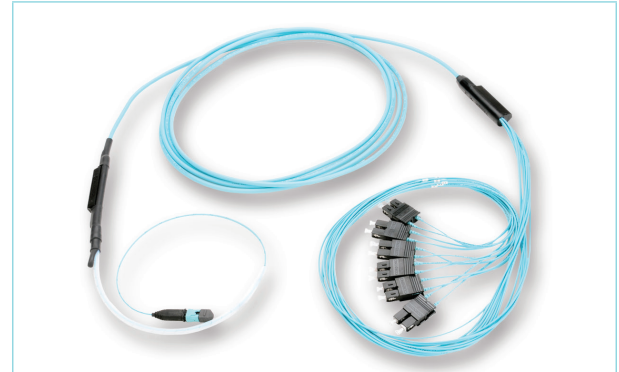
4) Furcation legs are staggered with the shortest stagger length noted as the minimum length.

Plug & Play™ Universal Systems

A LANscape® Pretium®
Solutions Product

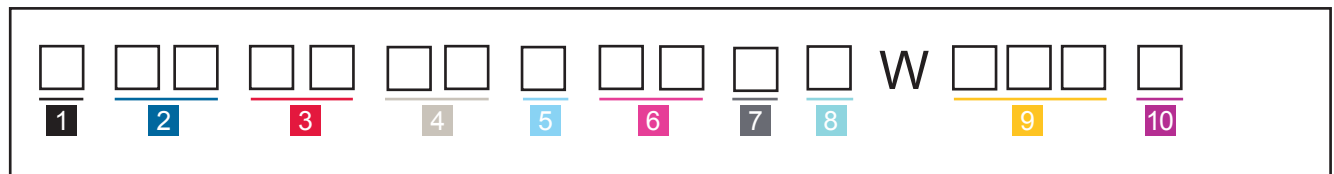
Hybrid Connector Trunks and Hybrid Extender Trunks

Plug & Play™ Universal Systems Hybrid Connector Trunks are terminated with MTP® Connectors on one end of the trunk and MT-RJ or SC connectors on the other end for applications requiring one end of the trunk to connect directly into system equipment or patch panels. Both Plug & Play Universal Systems trunks and extender trunks are available in hybrid connector options.



Plug & Play Classic Systems Hybrid Connector Trunks
| Photo LAN2734

Ordering Information



1 Select grip applications.
A = Grip on first end only
N = No grip

2 Select non-pinned MTP Connectors (end one or outside of reel).
69 = 62.5 μm multimode (OM1)
75 = 50 μm multimode (OM3/OM4)
90 = Single-mode (OS2)

3 Select the connector (end two or inside of reel).
SC Duplex
57 = Multimode
72 = Single-mode, UPC
See Note 4.

4 Select standard fiber count.
12 = 12 fibers 72 = 72 fibers
24 = 24 fibers 96 = 96 fibers
36 = 36 fibers E4 = 144 fibers
48 = 48 fibers

5 Select fiber type.
K = 62.5 μm multimode (OM1)
T = 50 μm multimode (OM3)
Q = 50 μm multimode (OM4)
G = Single-mode (OS2)

6 Select cable type.
PN = Non-armored plenum
AD = Armored plenum
See Note 1.

7 Select leg length on end one or outside of reel.
A = 24 in minimum stagger (+5/-0 in)
B = 36 in minimum stagger (+5/-0 in)
See Notes 2 and 3.

8 Select leg length on end two or inside of reel.
2.0 mm OD Legs
K = 24 in (-0/+3 in)
L = 36 in (-0/+3 in standard construction)
M = 48 in (-0/+3 in)
N = 60 in (-0/+3 in)
P = 72 in (-0/+3 in)
See Note 2.

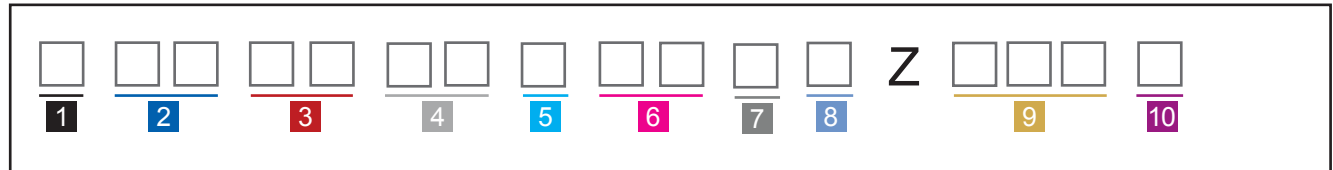
9 Select cable length (measured from furcation to furcation).
001-999

10 Select unit of measure.
M = Meters
F = Feet

1) Contact a Corning Customer Care Representative for non-standard indoor and outdoor cable offerings.
2) Furcation legs are color coded by fiber type: K = Orange; T and Q = Aqua; G = Yellow.
3) Furcation legs are staggered with the shortest stagger length noted as the minimum length.
4) Hybrid trunks with LC connectors are available as part of the Pretium EDGE® Solution. See LAN-1141-EN

Hybrid Extender Trunks

Ordering Information



1 Select grip applications.

A = Grip on first end only
N = No grip

2 Select pinned MTP

Connector (end one or
outside of reel).

70 = 62.5 µm multimode (OM1)
93 = 50 µm multimode
(OM3/OM4)
89 = Single-mode (OS2)

See Note 1.

3 Select the connector (end two or inside of reel).

SC Duplex

57 = Multimode
72 = Single-mode, UPC

See Note 5.

4 Select standard fiber count.

12 = 12 fibers 72 = 72 fibers
24 = 24 fibers 96 = 96 fibers
36 = 36 fibers E4 = 144 fibers
48 = 48 fibers

5 Select fiber type.

K = 62.5 µm multimode (OM1)
T = 50 µm multimode (OM3)
Q = 50 µm multimode (OM4)
G = Single-mode (OS2)

6 Select cable type.

PN = Non-armored plenum
AD = Armored plenum

See Note 2.

7 Select leg length on end one or outside of reel.

A = 24 in minimum stagger (+5/-0 in)
B = 36 in minimum stagger (+5/-0 in)

See Notes 3 and 4.

8 Select leg length on end two or inside of reel.

2.0 mm OD legs

K = 24 in (-0/+3 in)

L = 36 in (-0/+3 in standard
construction)

M = 48 in (-0/+3 in)

N = 60 in (-0/+3 in)

P = 72 in (-0/+3 in)

See Note 3.

9 Select cable length

(measured from furcation to
furcation).

001-999

10 Select unit of measure.

M = Meters

F = Feet

1) Hybrid universal extender trunks have pinned MTP Connectors on one end and single-fiber connectors on the other end. Alignment is achieved when mating a pinned MTP Connector to a non-pinned MTP Connector. Attempting to mate two pinned MTP Connectors or two non-pinned MTP Connectors will not produce the desired optical performance.

2) Contact a Corning Customer Care Representative for non-standard indoor and outdoor cable offerings.

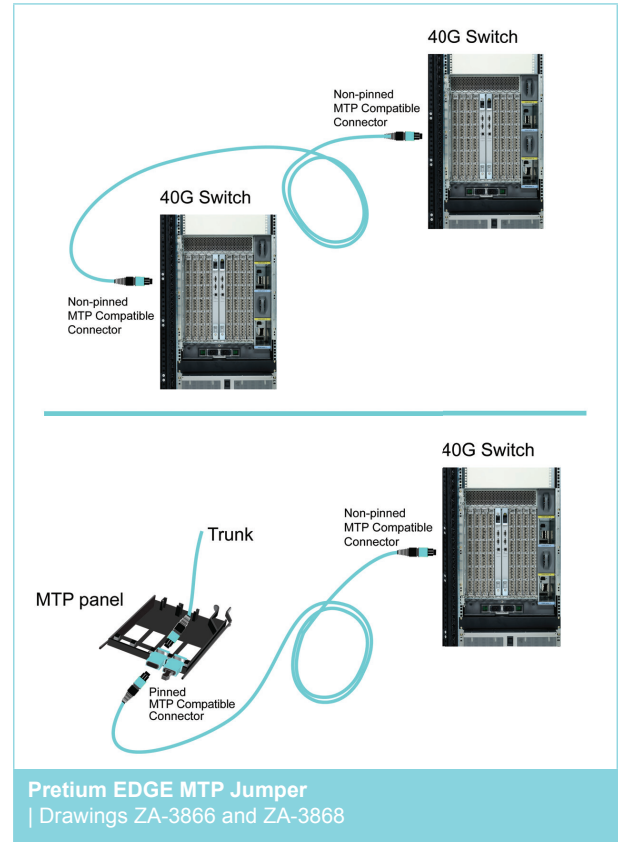
3) Furcation legs are color coded by fiber type: K = Orange; T and Q = Aqua; G = Yellow.

4) Furcation legs are staggered with the shortest stagger length noted as the minimum length.

5) Hybrid extender trunks with LC connectors are available as part of the Pretium EDGE Solutions. See LAN-1141-EN

MTP® Jumpers

Pretium EDGE® MTP® Jumpers allow for the seamless migration to higher data rates for multimode systems in the data center when used in conjunction with our universal trunks. This jumper is based around pinned or non-pinned 12-fiber MTP Connectors. Pictured here are the three most common applications for this type of jumper to make ordering easier. All the jumpers listed have a TIA-568 Type-B polarity and are plenum rated.



Ordering Information

J	□ □	□ □	1 2	□	E 8 - N B	□ □ □	F
	1	2		3		4	

- 1** Select first MTP Connector.
 75 = Non-pinned OM3/OM4
 93 = Pinned OM3/OM4
 89 = Pinned OS2
 90 = Non-pinned OS2

- 2** Select second MTP Connector.
 75 = Non-pinned OM3/OM4
 93 = Pinned OM3/OM4
 89 = Pinned OS2
 90 = Non-pinned OS2
See Note 1.

- 3** Select fiber type.
 T = 50 μm multimode (OM3)
 Q = 50 μm multimode (OM4)
 G = Single-mode (OS2)

- 4** Select length in feet.
 001-999

1) Always list lowest connector code first.
 2) Other polarities are available.

Plug & Play™ Universal Systems

A LANscape® Pretium®
Solutions Product

Housing Accessories

Part Number	Product Description	Units per Delivery	
RBC-02P	Plug & Play™ Systems Accessory Bracket, frame-mountable, holds 2 CCH Connector Panels or Modules	1/1	
PC1-BKT-23	Pretium EDGE® Extension and Flush Mount Bracket for mounting 1U housings into 23-in racks or cabinets	1/1	
PC2-BKT-23	Pretium EDGE® Extension and Flush Mount Bracket for mounting 2U housings into 23-in racks or cabinets	1/1	
PC4-BKT-23	Pretium EDGE® Solutions Mounting Bracket for mounting 4U housings into 23-in racks or cabinets	1/1	
PC1-BKT-FLSH	PCH Flush-mount Brackets, PCH-01U (one set)	1/1	
PC2-BKT-FLSH	PCH Flush-mount Brackets for PCH-02U (one set)	1/1	
PC4-BKT-FLSH	PCH Flush-mount Brackets PCH-04U (one set)	1/1	
PC1-LOCK-KIT	Door Lock Kit; can be installed on the front and/or back door(s) of the PCH-01U; comes with one lock and two keys	1/1	
HDWR-LOCK-KIT	Lock Kit for front door of housing; contains one lock with two keys	1/1	

Plug & Play™ Universal Systems

A LANscape® Pretium®
Solutions Product



Housing Accessories

Part Number	Product Description	Units per Delivery	
CJP-01U-P	Pretium® Jumper Management Panel 1U; provides jumper management in a 1.75-in rack space	1/1	
CJP-02U-P	Pretium® Jumper Management Panel 2U; provides jumper management in a 3.5-in rack space	1/1	
PC2-STRN	PCH Strain-relief Bracket; PCH-02U accepts up to two UCC kits (UCC-001)	1/1	
PC4-RJ-PLT	PCH 4U Strain-relief Rear Plate, dark metallic grey, for U-clip mounting	1/1	
CDF-RJ-BKT	CDF Frame-Mount Bracket for 1 U-clip	1/1	
CDF-RJ12-BKT	U-Clip Strain-relief Bracket, Plug & Play™ Systems, frame-mountable, 12 in, for 12 U-clips	1/1	
CDF-RJ18-BKT	U-Clip Strain-relief Bracket, Plug & Play™ Systems, frame-mountable, 18 in, for 18 U-clips	1/1	
EDGE-BKT-WT-2RU	Wire Tray Mounting Bracket for up to 2U of housing mounting space	1/1	
EDGE-BKT-WT-4RU	Wire Tray Mounting Bracket for up to 4U of housing mounting space	1/1	
EDGE-BKT-LR-2RU	Ladder Rack Mounting Bracket for up to 2U of housing mounting space	1/1	
EDGE-BKT-LR-4RU	Ladder Rack Mounting Bracket for up to 4U of housing mounting space	1/1	

Plug & Play™ Universal Systems

A LANscape® Pretium®
Solutions Product

Cleaning Accessories

Part Number	Product Description	Units per Delivery	
CLEANER-PORT-LC	Single-fiber Port Cleaner for LC, keyed LC and MU connector end faces for both UPC and APC polishes	1/1	
2104466-01	Fiber Optic Cleaning Tool used to clean MTP® Connector end faces as well as MTP Connectors installed in a module	1/1	



Corning Cable Systems LLC • PO Box 489 • Hickory, NC 28603-0489 USA

800-743-2675 • FAX: 828-325-5060 • International: +1-828-901-5000 • www.corning.com/cablesystems

A complete listing of the trademarks of Corning Cable Systems is available at www.corning.com/cablesystems/trademarks.

Corning Cable Systems is ISO 9001 certified. © 2014 Corning Cable Systems. All rights reserved.